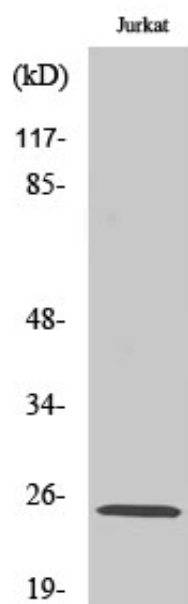


Ribosomal Protein L10L Polyclonal Antibody

Catalog_no :	AT4093
Applications :	WB,IHC-p,ELISA
Reactivity :	Human,Monkey
Category :	抗原抗体
Size :	100µg/50µg/20µg
Gene_name :	RPL10L
Protein_name :	60S ribosomal protein L10-like
Humangene_id :	140801
Humanswissprot_no :	Q96L21
Immunogen :	The antiserum was produced against synthesized peptide derived from human RPL10L. AA range:151-200
Specificity :	Ribosomal Protein L10L Polyclonal Antibody detects endogenous levels of Ribosomal Protein L10L protein.
Formulation :	Liquid in PBS containing 50% glycerol, 0.5% BSA and 0.02% sodium azide.
Source :	Rabbit
Dilution :	Western Blot: 1/500 - 1/2000. Immunohistochemistry: 1/100 - 1/300. ELISA: 1/10000. Not yet tested in other applications.
Purification :	The antibody was affinity-purified from rabbit antiserum by affinity-chromatography using epitope-specific immunogen.
Concentration :	1 mg/ml
Storage_stability :	-20°C/1 year
Msds :	MSDS_Antibody.pdf
Other_name :	RPL10L; 60S ribosomal protein L10-like
Molecular Weight :	20KD

Product Images



Western Blot analysis of various cells using Ribosomal Protein L10L Polyclonal Antibody diluted at 1 : 1000