

## Ribosomal Protein L15 Polyclonal Antibody

Catalog_no :	AT4097
Applications :	WB,IHC-p,ELISA
Reactivity :	Human,Mouse,Rat
Category :	抗原抗体
Size :	100µg/50µg/20µg
Gene_name :	RPL15
Protein_name :	60S ribosomal protein L15
Humangene_id :	<a href="#">6138</a>
Humanswissprot_no :	<a href="#">P61313</a>
Mousegene_id :	<a href="#">66480</a>
Mouseswissprot_no :	<a href="#">Q9CZM2</a>
Ratgene_id :	<a href="#">245981</a>
Ratswissprot_no :	<a href="#">P61314</a>
Immunogen :	The antiserum was produced against synthesized peptide derived from human RPL15. AA range:41-90
Specificity :	Ribosomal Protein L15 Polyclonal Antibody detects endogenous levels of Ribosomal Protein L15 protein.
Formulation :	Liquid in PBS containing 50% glycerol, 0.5% BSA and 0.02% sodium azide.
Source :	Rabbit
Dilution :	Western Blot: 1/500 - 1/2000. Immunohistochemistry: 1/100 - 1/300. ELISA: 1/40000. Not yet tested in other applications.
Purification :	The antibody was affinity-purified from rabbit antiserum by affinity-chromatography using epitope-specific immunogen.
Concentration :	1 mg/ml
Storage_stability :	-20°C/1 year

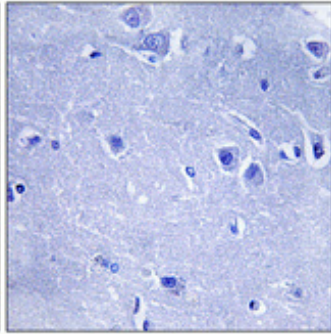
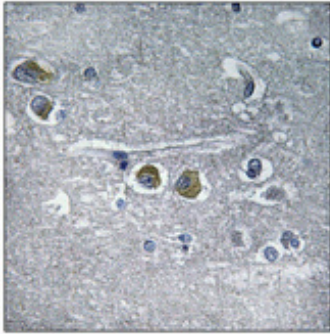


Msd : MSDS\_Antibody.pdf

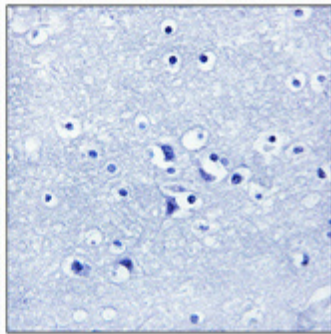
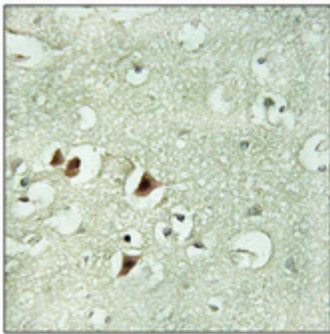
Other\_name : RPL15; EC45; TCBAP0781; 60S ribosomal protein L15

Molecular Weight : 20KD

## Product Images



Immunohistochemical analysis of paraffin-embedded Human brain. Antibody was diluted at 1:100(4°,overnight). High-pressure and temperature Tris-EDTA,pH8.0 was used for antigen retrieval. Negative contrl (right) obtaned from antibody was pre-absorbed by immunogen peptide.



Immunohistochemical analysis of paraffin-embedded Human brain. Antibody was diluted at 1:100(4°,overnight). High-pressure and temperature Tris-EDTA,pH8.0 was used for antigen retrieval. Negative contrl (right) obtaned from antibody was pre-absorbed by immunogen peptide.