

## Ribosomal Protein L17 Polyclonal Antibody

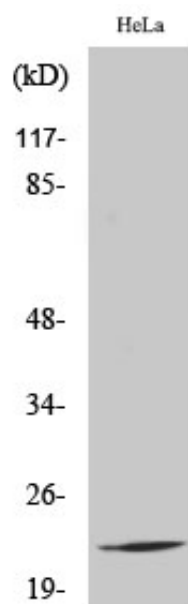
Catalog_no :	AT4098
Applications :	WB,IHC-p,ELISA
Reactivity :	Human,Mouse,Rat,Monkey
Category :	抗原抗体
Size :	100µg/50µg/20µg
Gene_name :	RPL17
Protein_name :	60S ribosomal protein L17
Humangene_id	<a href="#">6139</a>
:	
Humanswissprot	<a href="#">P18621</a>
_no :	
Mouseswissprot	<a href="#">Q9CPR4</a>
_no :	
Ratgene_id :	<a href="#">291434</a>
Ratswissprot_no	<a href="#">P24049</a>
:	
Immunogen :	The antiserum was produced against synthesized peptide derived from human RPL17. AA range:101-150
Specificity :	Ribosomal Protein L17 Polyclonal Antibody detects endogenous levels of Ribosomal Protein L17 protein.
Formulation :	Liquid in PBS containing 50% glycerol, 0.5% BSA and 0.02% sodium azide.
Source :	Rabbit
Dilution :	Western Blot: 1/500 - 1/2000. Immunohistochemistry: 1/100 - 1/300. ELISA: 1/10000. Not yet tested in other applications.
Purification :	The antibody was affinity-purified from rabbit antiserum by affinity-chromatography using epitope-specific immunogen.
Concentration :	1 mg/ml
Storage_stability	-20°C/1 year
:	
Msds :	<a href="#">MSDS_Antibody.pdf</a>



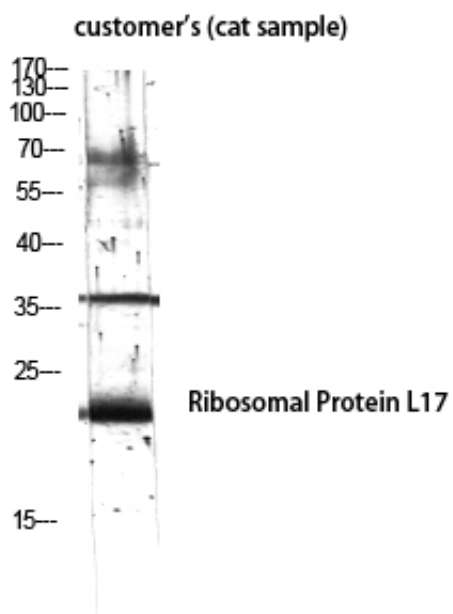
Other\_name : RPL17; 60S ribosomal protein L17; 60S ribosomal protein L23; PD-1

Molecular Weight : 24KD

## Product Images



Western Blot analysis of various cells using Ribosomal Protein L17 Polyclonal Antibody diluted at 1 : 2000



Western Blot analysis of customer's (cat sample) using Ribosomal Protein L17 Polyclonal Antibody diluted at 1 : 2000