

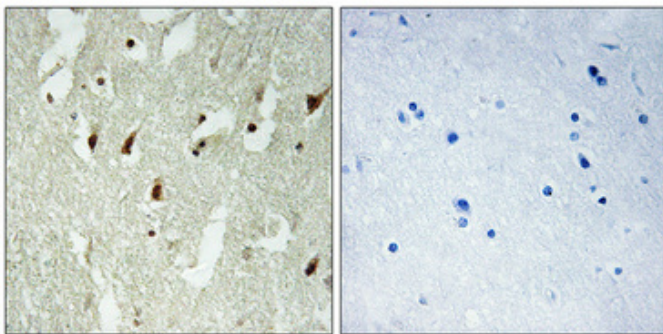
Ribosomal Protein L26L Polyclonal Antibody

Catalog_no :	AT4102
Applications :	WB,IHC-p,ELISA
Reactivity :	Human,Mouse,Rat
Category :	抗原抗体
Size :	100µg/50µg/20µg
Gene_name :	RPL26L1
Protein_name :	60S ribosomal protein L26-like 1
Humangene_id :	51121
Humanswissprot_no :	Q9UNX3
Immunogen :	The antiserum was produced against synthesized peptide derived from human RPL26L. AA range:96-145
Specificity :	Ribosomal Protein L26L Polyclonal Antibody detects endogenous levels of Ribosomal Protein L26L protein.
Formulation :	Liquid in PBS containing 50% glycerol, 0.5% BSA and 0.02% sodium azide.
Source :	Rabbit
Dilution :	Western Blot: 1/500 - 1/2000. Immunohistochemistry: 1/100 - 1/300. ELISA: 1/40000. Not yet tested in other applications.
Purification :	The antibody was affinity-purified from rabbit antiserum by affinity-chromatography using epitope-specific immunogen.
Concentration :	1 mg/ml
Storage_stability :	-20°C/1 year
Msds :	MSDS_Antibody.pdf
Other_name :	RPL26L1; RPL26P1; 60S ribosomal protein L26-like 1
Molecular Weight :	20KD

Product Images



Western Blot analysis of various cells using Ribosomal Protein L26L Polyclonal Antibody diluted at 1 : 2000



Immunohistochemical analysis of paraffin-embedded Human brain. Antibody was diluted at 1:100(4°,overnight). High-pressure and temperature Tris-EDTA,pH8.0 was used for antigen retrieval. Negative contrl (right) obtaned from antibody was pre-absorbed by immunogen peptide.