

## Ribosomal Protein L28 Polyclonal Antibody

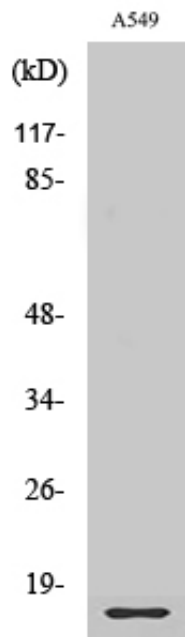
Catalog_no :	AT4104
Applications :	WB,IHC-p,ELISA
Reactivity :	Human,Mouse,Rat
Category :	抗原抗体
Size :	100µg/50µg/20µg
Gene_name :	RPL28
Protein_name :	60S ribosomal protein L28
Humangene_id :	<a href="#">6158</a>
Humanswissprot_no :	<a href="#">P46779</a>
Mousegene_id :	<a href="#">19943</a>
Mouseswissprot_no :	<a href="#">P41105</a>
Ratswissprot_no :	<a href="#">P17702</a>
Immunogen :	The antiserum was produced against synthesized peptide derived from human RPL28. AA range:41-90
Specificity :	Ribosomal Protein L28 Polyclonal Antibody detects endogenous levels of Ribosomal Protein L28 protein.
Formulation :	Liquid in PBS containing 50% glycerol, 0.5% BSA and 0.02% sodium azide.
Source :	Rabbit
Dilution :	Western Blot: 1/500 - 1/2000. Immunohistochemistry: 1/100 - 1/300. ELISA: 1/20000. Not yet tested in other applications.
Purification :	The antibody was affinity-purified from rabbit antiserum by affinity-chromatography using epitope-specific immunogen.
Concentration :	1 mg/ml
Storage_stability :	-20°C/1 year
Msds :	<a href="#">MSDS_Antibody.pdf</a>



Other\_name : RPL28; 60S ribosomal protein L28

Molecular Weight : 20KD

## Product Images



Western Blot analysis of various cells using Ribosomal Protein L28 Polyclonal Antibody diluted at 1 : 2000