

Ribosomal Protein L3 Polyclonal Antibody

Catalog_no :	AT4105
Applications :	WB,IHC-p,ELISA
Reactivity :	Human,Mouse,Rat
Category :	抗原抗体
Size :	100µg/50µg/20µg
Gene_name :	RPL3
Protein_name :	60S ribosomal protein L3
Humangene_id :	6122
Humanswissprot_no :	P39023
Mousegene_id :	27367
Mouseswissprot_no :	P27659
Ratgene_id :	300079
Ratswissprot_no :	P21531
Immunogen :	The antiserum was produced against synthesized peptide derived from human RPL3. AA range:211-260
Specificity :	Ribosomal Protein L3 Polyclonal Antibody detects endogenous levels of Ribosomal Protein L3 protein.
Formulation :	Liquid in PBS containing 50% glycerol, 0.5% BSA and 0.02% sodium azide.
Source :	Rabbit
Dilution :	Western Blot: 1/500 - 1/2000. Immunohistochemistry: 1/100 - 1/300. ELISA: 1/20000. Not yet tested in other applications.
Purification :	The antibody was affinity-purified from rabbit antiserum by affinity-chromatography using epitope-specific immunogen.
Concentration :	1 mg/ml
Storage_stability :	-20°C/1 year

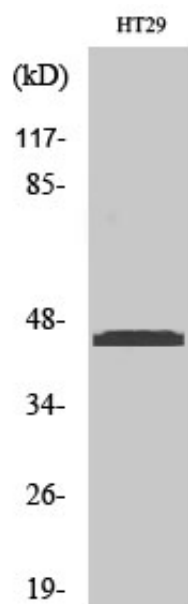


Msd : [MSDS_Antibody.pdf](#)

Other_name : [RPL3; OK/SW-cl.32; 60S ribosomal protein L3; HIV-1 TAR RNA-binding protein B; TARBP-B](#)

Molecular Weight : [46KD](#)

Product Images



Western Blot analysis of various cells using Ribosomal Protein L3 Polyclonal Antibody