

Ribosomal Protein L34 Polyclonal Antibody

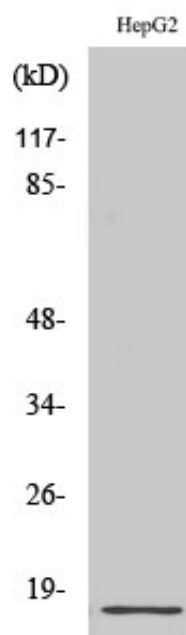
Catalog_no :	<u>AT4108</u>
Applications :	<u>WB,IHC-p,IF,ELISA</u>
Reactivity :	<u>Human,Mouse,Rat</u>
Category :	<u>抗原抗体</u>
Size :	<u>100µg/50µg/20µg</u>
Gene_name :	<u>RPL34</u>
Protein_name :	<u>60S ribosomal protein L34</u>
Humangene_id	<u>6164</u>
:	<u></u>
Humanswissprot	<u>P49207</u>
_no :	<u></u>
Mousegene_id :	<u>1.00044e+008</u>
Mouseswissprot	<u>Q9D1R9</u>
_no :	<u></u>
Ratswissprot_no	<u>P11250</u>
:	<u></u>
Immunogen :	<u>The antiserum was produced against synthesized peptide derived from human RPL34. AA range:41-90</u>
Specificity :	<u>Ribosomal Protein L34 Polyclonal Antibody detects endogenous levels of Ribosomal Protein L34 protein.</u>
Formulation :	<u>Liquid in PBS containing 50% glycerol, 0.5% BSA and 0.02% sodium azide.</u>
Source :	<u>Rabbit</u>
Dilution :	<u>Western Blot: 1/500 - 1/2000. Immunohistochemistry: 1/100 - 1/300. Immunofluorescence: 1/200 - 1/1000. ELISA: 1/20000. Not yet tested in other applications.</u>
Purification :	<u>The antibody was affinity-purified from rabbit antiserum by affinity-chromatography using epitope-specific immunogen.</u>
Concentration :	<u>1 mg/ml</u>
Storage_stability	<u>-20°C/1 year</u>
:	<u></u>
Msds :	<u>MSDS_Antibody.pdf</u>



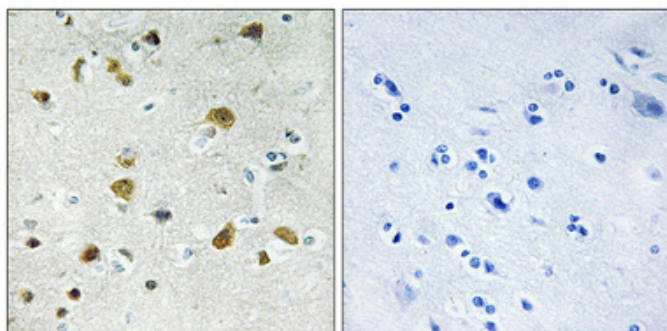
Other_name : RPL34; 60S ribosomal protein L34

Molecular Weight : 13KD

Product Images



Western Blot analysis of various cells using Ribosomal Protein L34 Polyclonal Antibody diluted at 1 : 500



Immunohistochemical analysis of paraffin-embedded Human brain. Antibody was diluted at 1:100(4°,overnight). High-pressure and temperature Tris-EDTA,pH8.0 was used for antigen retrieval. Negative contrl (right) obtaned from antibody was pre-absorbed by immunogen peptide.