

Ribosomal Protein L35 Polyclonal Antibody

Catalog_no :	AT4109
Applications :	WB,IHC-p,ELISA
Reactivity :	Human,Mouse,Rat
Category :	抗原抗体
Size :	100µg/50µg/20µg
Gene_name :	RPL35
Protein_name :	60S ribosomal protein L35
Humangene_id :	11224
Humanswissprot_no :	P42766
Mousegene_id :	66489
Mouseswissprot_no :	Q6ZWW7
Ratgene_id :	296709
Ratswissprot_no :	P17078
Immunogen :	The antiserum was produced against synthesized peptide derived from human RPL35. AA range:51-100
Specificity :	Ribosomal Protein L35 Polyclonal Antibody detects endogenous levels of Ribosomal Protein L35 protein.
Formulation :	Liquid in PBS containing 50% glycerol, 0.5% BSA and 0.02% sodium azide.
Source :	Rabbit
Dilution :	Western Blot: 1/500 - 1/2000. Immunohistochemistry: 1/100 - 1/300. ELISA: 1/10000. Not yet tested in other applications.
Purification :	The antibody was affinity-purified from rabbit antiserum by affinity-chromatography using epitope-specific immunogen.
Concentration :	1 mg/ml
Storage_stability :	-20°C/1 year

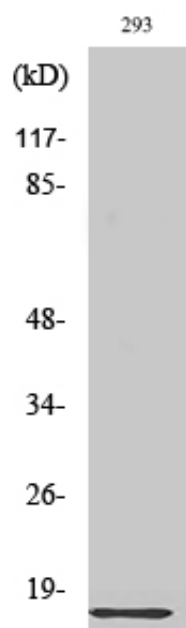


Msd : MSDS_Antibody.pdf

Other_name : RPL35; 60S ribosomal protein L35

Molecular Weight : 18KD

Product Images



Western Blot analysis of various cells using Ribosomal Protein L35 Polyclonal Antibody diluted at 1 : 2000