

Ribosomal Protein L36 Polyclonal Antibody

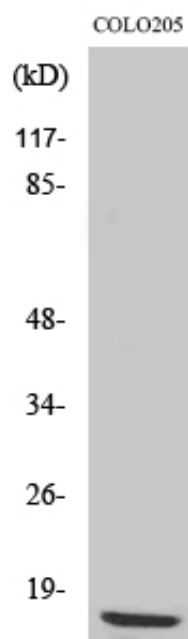
Catalog_no :	AT4110
Applications :	WB,IHC-p,IF,ELISA
Reactivity :	Human,Mouse,Rat
Category :	抗原抗体
Size :	100µg/50µg/20µg
Gene_name :	RPL36
Protein_name :	60S ribosomal protein L36
Humangene_id :	25873
Humanswissprot_no :	Q9Y3U8
Mouseswissprot_no :	P47964
Ratgene_id :	58927
Ratswissprot_no :	P39032
Immunogen :	The antiserum was produced against synthesized peptide derived from human RPL36. AA range:51-100
Specificity :	Ribosomal Protein L36 Polyclonal Antibody detects endogenous levels of Ribosomal Protein L36 protein.
Formulation :	Liquid in PBS containing 50% glycerol, 0.5% BSA and 0.02% sodium azide.
Source :	Rabbit
Dilution :	Western Blot: 1/500 - 1/2000. Immunohistochemistry: 1/100 - 1/300. Immunofluorescence: 1/200 - 1/1000. ELISA: 1/40000. Not yet tested in other applications.
Purification :	The antibody was affinity-purified from rabbit antiserum by affinity-chromatography using epitope-specific immunogen.
Concentration :	1 mg/ml
Storage_stability :	-20°C/1 year
Msds :	MSDS_Antibody.pdf



Other_name : RPL36; 60S ribosomal protein L36

Molecular Weight : 12KD

Product Images



Western Blot analysis of various cells using Ribosomal Protein L36 Polyclonal Antibody diluted at 1 : 500