

Ribosomal Protein L37A Polyclonal Antibody

Catalog_no :	AT4112
Applications :	IHC-p,WB,ELISA
Reactivity :	Human,Mouse,Rat
Category :	抗原抗体
Size :	100µg/50µg/20µg
Gene_name :	RPL37A
Protein_name :	60S ribosomal protein L37a
Humangene_id	6168
:	
Humanswissprot	P61513
_no :	
Mousegene_id :	19981
Mouseswissprot	P61514
_no :	
Ratgene_id :	1.00362e+008
Ratswissprot_no	D4AAZ6
:	
Immunogen :	The antiserum was produced against synthesized peptide derived from human RPL37A. AA range:21-70
Specificity :	Ribosomal Protein L37A Polyclonal Antibody detects endogenous levels of Ribosomal Protein L37A protein.
Formulation :	Liquid in PBS containing 50% glycerol, 0.5% BSA and 0.02% sodium azide.
Source :	Rabbit
Dilution :	WB 1:500-2000 Immunohistochemistry: 1/100 - 1/300. ELISA: 1/40000. Not yet tested in other applications.
Purification :	The antibody was affinity-purified from rabbit antiserum by affinity-chromatography using epitope-specific immunogen.
Concentration :	1 mg/ml
Storage_stability	-20°C/1 year
:	

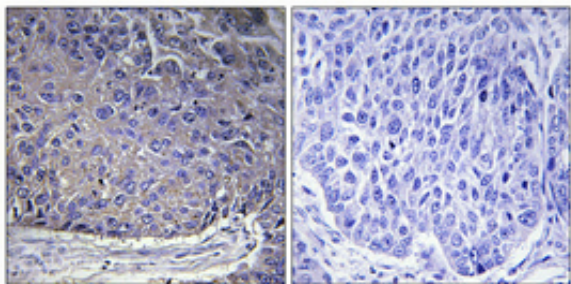


Msd : MSDS_Antibody.pdf

Other_name : RPL37A; 60S ribosomal protein L37a

Molecular Weight : 10KD

Product Images



Immunohistochemical analysis of paraffin-embedded Human lung cancer. Antibody was diluted at 1:100(4°,overnight). High-pressure and temperature Tris-EDTA,pH8.0 was used for antigen retrieval. Negative contrl (right) obtaned from antibody was pre-absorbed by immunogen peptide.