

Ribosomal Protein L39 Polyclonal Antibody

Catalog_no :	AT4113
Applications :	WB,IHC-p,IF,ELISA
Reactivity :	Human,Mouse,Rat
Category :	抗原抗体
Size :	100µg/50µg/20µg
Gene_name :	RPL39
Protein_name :	60S ribosomal protein L39
Humangene_id :	6170
Humanswissprot_no :	P62891
Mousegene_id :	67248
Mouseswissprot_no :	P62892
Ratgene_id :	1.00362e+008
Ratswissprot_no :	P62893
Immunogen :	The antiserum was produced against synthesized peptide derived from human RPL39. AA range:1-50
Specificity :	Ribosomal Protein L39 Polyclonal Antibody detects endogenous levels of Ribosomal Protein L39 protein.
Formulation :	Liquid in PBS containing 50% glycerol, 0.5% BSA and 0.02% sodium azide.
Source :	Rabbit
Dilution :	Western Blot: 1/500 - 1/2000. Immunohistochemistry: 1/100 - 1/300. Immunofluorescence: 1/200 - 1/1000. ELISA: 1/40000. Not yet tested in other applications.
Purification :	The antibody was affinity-purified from rabbit antiserum by affinity-chromatography using epitope-specific immunogen.
Concentration :	1 mg/ml
Storage_stability :	-20°C/1 year

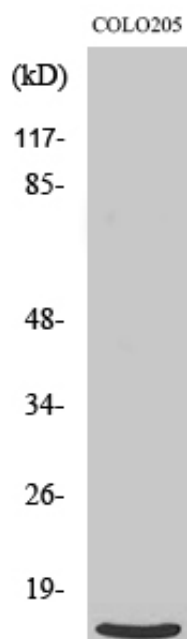


Msd : MSDS_Antibody.pdf

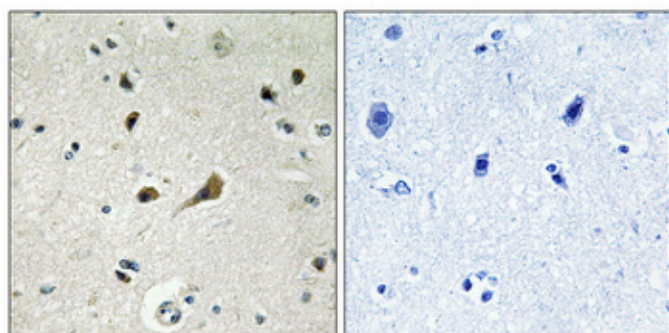
Other_name : RPL39; 60S ribosomal protein L39

Molecular Weight : 6KD

Product Images



Western Blot analysis of various cells using Ribosomal Protein L39 Polyclonal Antibody



Immunohistochemical analysis of paraffin-embedded Human brain. Antibody was diluted at 1:100(4°, overnight). High-pressure and temperature Tris-EDTA, pH8.0 was used for antigen retrieval. Negative control (right) obtained from antibody was pre-absorbed by immunogen peptide.