

Ribosomal Protein L40 Polyclonal Antibody

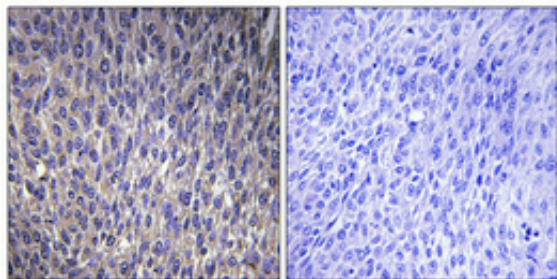
Catalog_no :	AT4116
Applications :	IHC-p,ELISA
Reactivity :	Human,Mouse,Rat
Category :	抗原抗体
Size :	100µg/50µg/20µg
Gene_name :	UBA52
Protein_name :	Ubiquitin-60S ribosomal protein L40
Humangene_id :	7311
Humanswissprot_no :	P62987
Mousegene_id :	22186
Mouseswissprot_no :	P62984
Ratgene_id :	64156
Ratswissprot_no :	P62986
Immunogen :	The antiserum was produced against synthesized peptide derived from human RPL40. AA range:71-120
Specificity :	Ribosomal Protein L40 Polyclonal Antibody detects endogenous levels of Ribosomal Protein L40 protein.
Formulation :	Liquid in PBS containing 50% glycerol, 0.5% BSA and 0.02% sodium azide.
Source :	Rabbit
Dilution :	Immunohistochemistry: 1/100 - 1/300. ELISA: 1/40000. Not yet tested in other applications.
Purification :	The antibody was affinity-purified from rabbit antiserum by affinity-chromatography using epitope-specific immunogen.
Concentration :	1 mg/ml
Storage_stability :	-20°C/1 year



MsdS : [MSDS_Antibody.pdf](#)

Other_name : [UBA52; UBCEP2; Ubiquitin-60S ribosomal protein L40; CEP52; Ubiquitin A-52 residue ribosomal protein fusion product 1](#)

Product Images



Immunohistochemical analysis of paraffin-embedded Human lung cancer. Antibody was diluted at 1:100(4°,overnight). High-pressure and temperature Tris-EDTA,pH8.0 was used for antigen retrieval. Negative contrl (right) obtaned from antibody was pre-absorbed by immunogen peptide.