

Ribosomal Protein L7 Polyclonal Antibody

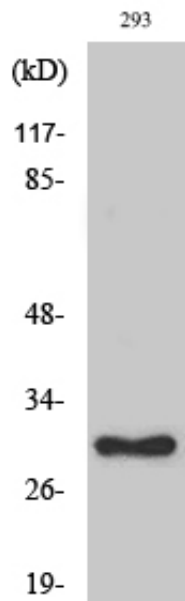
Catalog_no :	AT4118
Applications :	WB,IHC-p,ELISA
Reactivity :	Human,Mouse,Rat
Category :	抗原抗体
Size :	100µg/50µg/20µg
Gene_name :	RPL7
Protein_name :	60S ribosomal protein L7
Humangene_id :	6129
Humanswissprot_no :	P18124
Mousegene_id :	19989
Mouseswissprot_no :	P14148
Ratswissprot_no :	P05426
Immunogen :	The antiserum was produced against synthesized peptide derived from human RPL7. AA range:199-248
Specificity :	Ribosomal Protein L7 Polyclonal Antibody detects endogenous levels of Ribosomal Protein L7 protein.
Formulation :	Liquid in PBS containing 50% glycerol, 0.5% BSA and 0.02% sodium azide.
Source :	Rabbit
Dilution :	Western Blot: 1/500 - 1/2000. Immunohistochemistry: 1/100 - 1/300. ELISA: 1/10000. Not yet tested in other applications.
Purification :	The antibody was affinity-purified from rabbit antiserum by affinity-chromatography using epitope-specific immunogen.
Concentration :	1 mg/ml
Storage_stability :	-20°C/1 year
Msds :	MSDS_Antibody.pdf



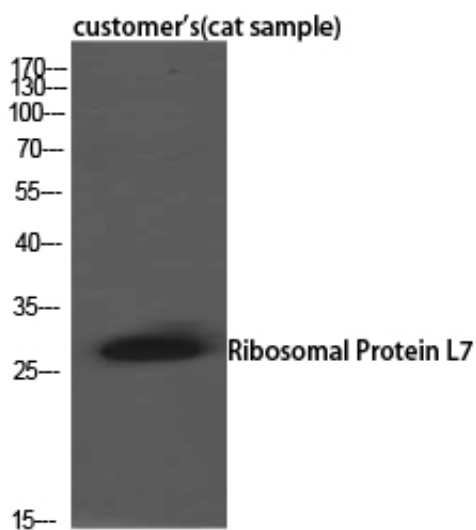
Other_name : RPL7; 60S ribosomal protein L7

Molecular Weight : 32KD

Product Images



Western Blot analysis of various cells using Ribosomal Protein L7 Polyclonal Antibody diluted at 1 : 2000



Western Blot analysis of customer's (cat sample) using Ribosomal Protein L7 Polyclonal Antibody. Antibody was diluted at 1:2000

Western blot analysis of Mouse-kidney mouse-brain HELA KB SH-SY5Y 293T 3T3 lysis using Ribosomal Protein L7 antibody. Antibody was diluted at 1:2000

