

Ribosomal Protein S12 Polyclonal Antibody

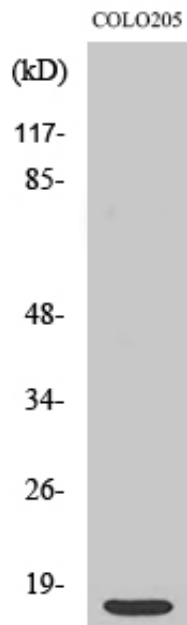
Catalog_no :	AT4122
Applications :	WB,IHC-p,IF,ELISA
Reactivity :	Human,Mouse,Rat
Category :	抗原抗体
Size :	100µg/50µg/20µg
Gene_name :	RPS12
Protein_name :	40S ribosomal protein S12
Humangene_id :	6206
Humanswissprot_no :	P25398
Mouseswissprot_no :	P63323
Ratswissprot_no :	P63324
Immunogen :	The antiserum was produced against synthesized peptide derived from human RPS12. AA range:83-132
Specificity :	Ribosomal Protein S12 Polyclonal Antibody detects endogenous levels of Ribosomal Protein S12 protein.
Formulation :	Liquid in PBS containing 50% glycerol, 0.5% BSA and 0.02% sodium azide.
Source :	Rabbit
Dilution :	Western Blot: 1/500 - 1/2000. Immunohistochemistry: 1/100 - 1/300. Immunofluorescence: 1/200 - 1/1000. ELISA: 1/40000. Not yet tested in other applications.
Purification :	The antibody was affinity-purified from rabbit antiserum by affinity-chromatography using epitope-specific immunogen.
Concentration :	1 mg/ml
Storage_stability :	-20°C/1 year
Msds :	MSDS_Antibody.pdf
Other_name :	RPS12; 40S ribosomal protein S12



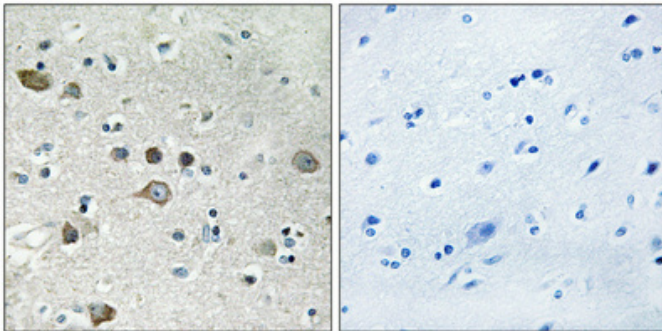
Molecular
Weight :

15KD

Product Images



Western Blot analysis of various cells using Ribosomal Protein S12 Polyclonal Antibody



Immunohistochemical analysis of paraffin-embedded Human brain. Antibody was diluted at 1:100(4°,overnight). High-pressure and temperature Tris-EDTA,pH8.0 was used for antigen retrieval. Negative contrl (right) obtaned from antibody was pre-absorbed by immunogen peptide.