

## Ribosomal Protein S20 Polyclonal Antibody

Catalog_no :	AT4129
Applications :	WB,IHC-p,IF,ELISA
Reactivity :	Human,Mouse,Rat
Category :	抗原抗体
Size :	100µg/50µg/20µg
Gene_name :	RPS20
Protein_name :	40S ribosomal protein S20
Humangene_id :	<a href="#">6224</a>
Humanswissprot_no :	<a href="#">P60866</a>
Mousegene_id :	<a href="#">67427</a>
Mouseswissprot_no :	<a href="#">P60867</a>
Ratgene_id :	<a href="#">1.0036e+008</a>
Ratswissprot_no :	<a href="#">P60868</a>
Immunogen :	The antiserum was produced against synthesized peptide derived from human RPS20. AA range:31-80
Specificity :	Ribosomal Protein S20 Polyclonal Antibody detects endogenous levels of Ribosomal Protein S20 protein.
Formulation :	Liquid in PBS containing 50% glycerol, 0.5% BSA and 0.02% sodium azide.
Source :	Rabbit
Dilution :	Western Blot: 1/500 - 1/2000. Immunohistochemistry: 1/100 - 1/300. Immunofluorescence: 1/200 - 1/1000. ELISA: 1/40000. Not yet tested in other applications.
Purification :	The antibody was affinity-purified from rabbit antiserum by affinity-chromatography using epitope-specific immunogen.
Concentration :	1 mg/ml
Storage_stability :	-20°C/1 year

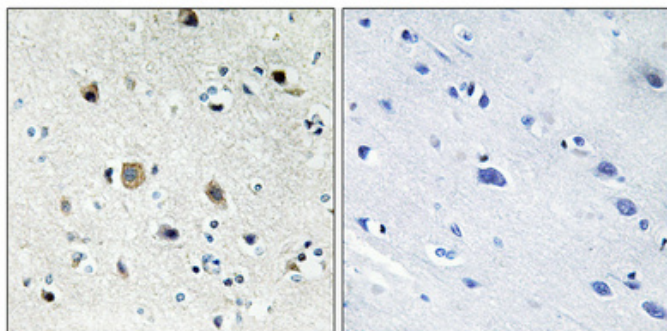


Msd : MSDS\_Antibody.pdf

Other\_name : RPS20; 40S ribosomal protein S20

Molecular Weight : 13KD

## Product Images



Immunohistochemical analysis of paraffin-embedded Human brain. Antibody was diluted at 1:100(4°,overnight). High-pressure and temperature Tris-EDTA,pH8.0 was used for antigen retrieval. Negative contrl (right) obtaned from antibody was pre-absorbed by immunogen peptide.