



## Ribosomal Protein S27L Polyclonal Antibody

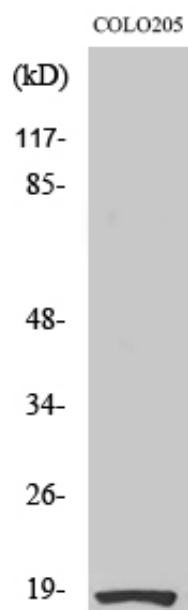
Catalog_no :	AT4133
Applications :	WB,IHC-p,ELISA
Reactivity :	Human,Mouse
Category :	抗原抗体
Size :	100µg/50µg/20µg
Gene_name :	RPS27L
Protein_name :	40S ribosomal protein S27-like
Humangene_id :	<a href="#">51065</a>
Humanswissprot_no :	<a href="#">Q71UM5</a>
Mousegene_id :	<a href="#">67941</a>
Mouseswissprot_no :	<a href="#">Q6ZWY3</a>
Immunogen :	The antiserum was produced against synthesized peptide derived from human RPS27L. AA range:1-50
Specificity :	Ribosomal Protein S27L Polyclonal Antibody detects endogenous levels of Ribosomal Protein S27L protein.
Formulation :	Liquid in PBS containing 50% glycerol, 0.5% BSA and 0.02% sodium azide.
Source :	Rabbit
Dilution :	Western Blot: 1/500 - 1/2000. Immunohistochemistry: 1/100 - 1/300. ELISA: 1/10000. Not yet tested in other applications.
Purification :	The antibody was affinity-purified from rabbit antiserum by affinity-chromatography using epitope-specific immunogen.
Concentration :	1 mg/ml
Storage_stability :	-20°C/1 year
Msds :	<a href="#">MSDS_Antibody.pdf</a>
Other_name :	RPS27L; 40S ribosomal protein S27-like
Molecular	18KD



Weight :

---

## Product Images



Western Blot analysis of various cells using Ribosomal Protein S27L Polyclonal Antibody