

Ribosomal Protein S4X Polyclonal Antibody

Catalog_no :	AT4135
Applications :	WB,IF,ELISA
Reactivity :	Human,Mouse,Rat
Category :	抗原抗体
Size :	100µg/50µg/20µg
Gene_name :	RPS4X
Protein_name :	40S ribosomal protein S4 X isoform
Humangene_id :	6191
Humanswissprot_no :	P62701
Mousegene_id :	20102
Mouseswissprot_no :	P62702
Ratgene_id :	1.00363e+008
Ratswissprot_no :	P62703
Immunogen :	The antiserum was produced against synthesized peptide derived from human RPS4X. AA range:81-130
Specificity :	Ribosomal Protein S4X Polyclonal Antibody detects endogenous levels of Ribosomal Protein S4X protein.
Formulation :	Liquid in PBS containing 50% glycerol, 0.5% BSA and 0.02% sodium azide.
Source :	Rabbit
Dilution :	Western Blot: 1/500 - 1/2000. Immunofluorescence: 1/200 - 1/1000. ELISA: 1/40000. Not yet tested in other applications.
Purification :	The antibody was affinity-purified from rabbit antiserum by affinity-chromatography using epitope-specific immunogen.
Concentration :	1 mg/ml
Storage_stability :	-20°C/1 year

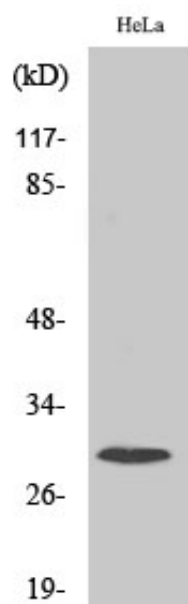


MsdS : [MSDS_Antibody.pdf](#)

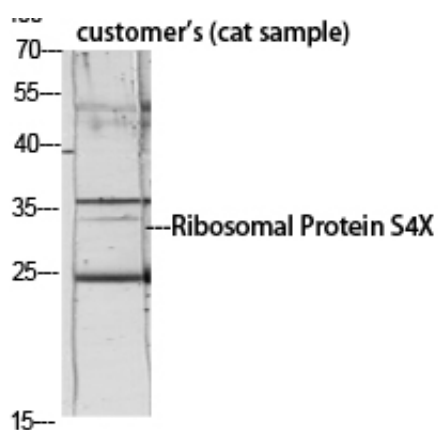
Other_name : RPS4X; CCG2; RPS4; SCAR; 40S ribosomal protein S4; X isoform; SCR10; Single copy abundant mRNA protein

Molecular Weight : 30KD

Product Images



Western Blot analysis of various cells using Ribosomal Protein S4X Polyclonal Antibody diluted at 1 : 1000



Western Blot analysis of customer's (cat sample) using Ribosomal Protein S4X Polyclonal Antibody diluted at 1 : 1000