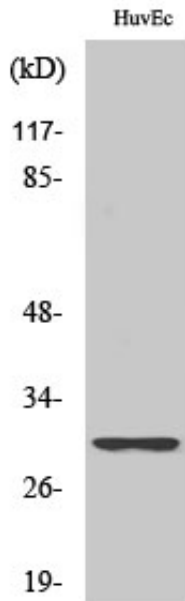


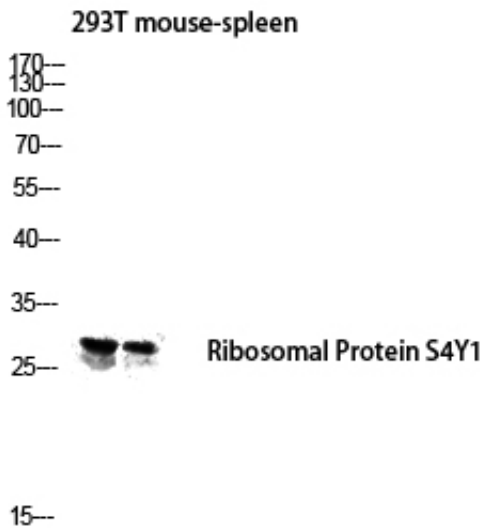
## Ribosomal Protein S4Y1 Polyclonal Antibody

Catalog_no :	AT4136
Applications :	WB,IHC-p,IF,ELISA
Reactivity :	Human
Category :	抗原抗体
Size :	100µg/50µg/20µg
Gene_name :	RPS4Y1
Protein_name :	40S ribosomal protein S4 Y isoform 1
Humangene_id :	<a href="#">6192</a>
Humanswissprot_no :	<a href="#">P22090</a>
Immunogen :	The antiserum was produced against synthesized peptide derived from human RPS4Y1. AA range:214-263
Specificity :	Ribosomal Protein S4Y1 Polyclonal Antibody detects endogenous levels of Ribosomal Protein S4Y1 protein.
Formulation :	Liquid in PBS containing 50% glycerol, 0.5% BSA and 0.02% sodium azide.
Source :	Rabbit
Dilution :	Western Blot: 1/500 - 1/2000. Immunohistochemistry: 1/100 - 1/300. Immunofluorescence: 1/200 - 1/1000. ELISA: 1/20000. Not yet tested in other applications.
Purification :	The antibody was affinity-purified from rabbit antiserum by affinity-chromatography using epitope-specific immunogen.
Concentration :	1 mg/ml
Storage_stability :	-20°C/1 year
Msds :	<a href="#">MSDS_Antibody.pdf</a>
Other_name :	RPS4Y1; RPS4Y; 40S ribosomal protein S4; Y isoform 1
Molecular Weight :	29KD

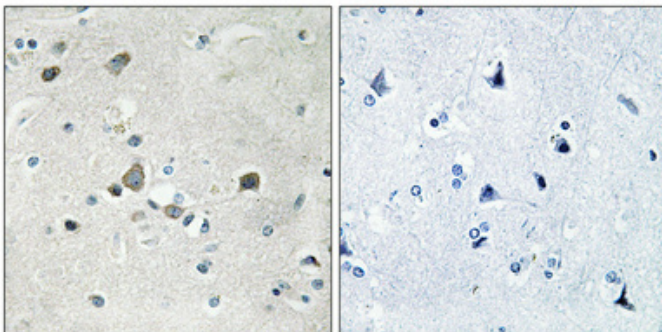
## Product Images



Western Blot analysis of various cells using Ribosomal Protein S4Y1 Polyclonal Antibody diluted at 1 : 1000



Western blot analysis of 293T mouse-spleen lysis using Ribosomal Protein S4Y1 antibody. Antibody was diluted at 1:1000



Immunohistochemical analysis of paraffin-embedded Human brain. Antibody was diluted at 1:100(4°,overnight). High-pressure and temperature Tris-EDTA,pH8.0 was used for antigen retrieval. Negative contrl (right) obtaned from antibody was pre-absorbed by immunogen peptide.