

## Ribosomal Protein S8 Polyclonal Antibody

Catalog_no :	AT4141
Applications :	WB,IHC-p,ELISA
Reactivity :	Human,Mouse,Rat
Category :	抗原抗体
Size :	100µg/50µg/20µg
Gene_name :	RPS8
Protein_name :	40S ribosomal protein S8
Humangene_id :	<a href="#">6202</a>
Humanswissprot_no :	<a href="#">P62241</a>
Mousegene_id :	<a href="#">1.0004e+008</a>
Mouseswissprot_no :	<a href="#">P62242</a>
Ratgene_id :	<a href="#">297756</a>
Ratswissprot_no :	<a href="#">P62243</a>
Immunogen :	The antiserum was produced against synthesized peptide derived from human RPS8. AA range:111-160
Specificity :	Ribosomal Protein S8 Polyclonal Antibody detects endogenous levels of Ribosomal Protein S8 protein.
Formulation :	Liquid in PBS containing 50% glycerol, 0.5% BSA and 0.02% sodium azide.
Source :	Rabbit
Dilution :	Western Blot: 1/500 - 1/2000. Immunohistochemistry: 1/100 - 1/300. ELISA: 1/20000. Not yet tested in other applications.
Purification :	The antibody was affinity-purified from rabbit antiserum by affinity-chromatography using epitope-specific immunogen.
Concentration :	1 mg/ml
Storage_stability :	-20°C/1 year

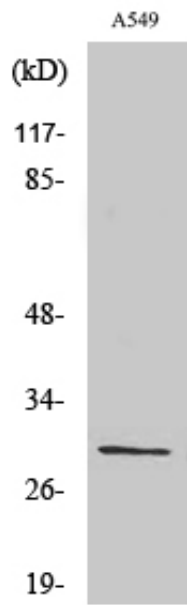


Msd : MSDS\_Antibody.pdf

Other\_name : RPS8; OK/SW-cl.83; 40S ribosomal protein S8

Molecular Weight : 30KD

## Product Images



Western Blot analysis of various cells using Ribosomal Protein S8 Polyclonal Antibody diluted at 1 : 2000