

## Rim4 Polyclonal Antibody

Catalog_no :	<u>AT4143</u>
Applications :	<u>WB,IHC-p,ELISA</u>
Reactivity :	<u>Human,Mouse,Rat</u>
Category :	<u>抗原抗体</u>
Size :	<u>100µg/50µg/20µg</u>
Gene_name :	<u>RIMS4</u>
Protein_name :	<u>Regulating synaptic membrane exocytosis protein 4</u>
Humangene_id :	<u><a href="#">140730</a></u>
Humanswissprot_no :	<u><a href="#">Q9H426</a></u>
Mousegene_id :	<u><a href="#">241770</a></u>
Mouseswissprot_no :	<u><a href="#">P60191</a></u>
Ratgene_id :	<u><a href="#">266976</a></u>
Ratswissprot_no :	<u><a href="#">Q8CIX1</a></u>
Immunogen :	<u>The antiserum was produced against synthesized peptide derived from human RIMS4. AA range:33-82</u>
Specificity :	<u>Rim4 Polyclonal Antibody detects endogenous levels of Rim4 protein.</u>
Formulation :	<u>Liquid in PBS containing 50% glycerol, 0.5% BSA and 0.02% sodium azide.</u>
Source :	<u>Rabbit</u>
Dilution :	<u>Western Blot: 1/500 - 1/2000. Immunohistochemistry: 1/100 - 1/300. ELISA: 1/20000. Not yet tested in other applications.</u>
Purification :	<u>The antibody was affinity-purified from rabbit antiserum by affinity-chromatography using epitope-specific immunogen.</u>
Concentration :	<u>1 mg/ml</u>
Storage_stability :	<u>-20°C/1 year</u>
Msds :	<u>MSDS_Antibody.pdf</u>



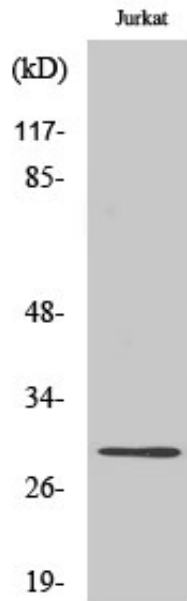
Other\_name : RIMS4; C20orf190; Regulating synaptic membrane exocytosis protein 4; RIM4 gamma; Rab3-interacting molecule 4; RIM 4

---

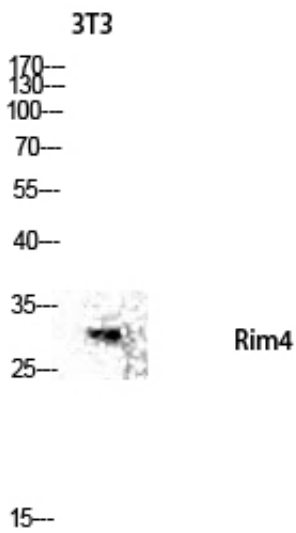
Molecular Weight : 30KD

---

## Product Images



Western Blot analysis of various cells using Rim4 Polyclonal Antibody diluted at 1 : 500



Western blot analysis of 3T3 lysis using Rim4 antibody. Antibody was diluted at 1:500