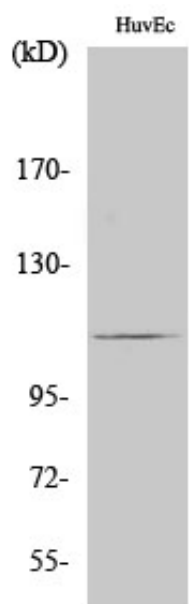


## RIN3 Polyclonal Antibody

Catalog_no :	AT4145
Applications :	WB,ELISA
Reactivity :	Human
Category :	抗原抗体
Size :	100µg/50µg/20µg
Gene_name :	RIN3
Protein_name :	Ras and Rab interactor 3
Humangene_id :	<a href="#">79890</a>
Humanswissprot_no :	<a href="#">Q8TB24</a>
Immunogen :	The antiserum was produced against synthesized peptide derived from human RIN3. AA range:391-440
Specificity :	RIN3 Polyclonal Antibody detects endogenous levels of RIN3 protein.
Formulation :	Liquid in PBS containing 50% glycerol, 0.5% BSA and 0.02% sodium azide.
Source :	Rabbit
Dilution :	Western Blot: 1/500 - 1/2000. ELISA: 1/10000. Not yet tested in other applications.
Purification :	The antibody was affinity-purified from rabbit antiserum by affinity-chromatography using epitope-specific immunogen.
Concentration :	1 mg/ml
Storage_stability :	-20°C/1 year
Msds :	MSDS_Antibody.pdf
Other_name :	RIN3; Ras and Rab interactor 3; Ras interaction/interference protein 3
Molecular Weight :	107KD

## Product Images



Western Blot analysis of various cells using RIN3 Polyclonal Antibody