

RIP2 Polyclonal Antibody

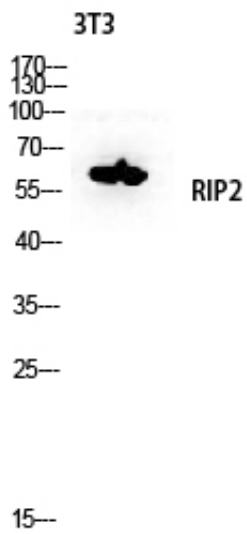
Catalog_no :	AT4147
Applications :	WB,IHC-p,ELISA
Reactivity :	Human,Mouse
Category :	抗原抗体
Size :	100µg/50µg/20µg
Gene_name :	RIPK2
Protein_name :	Receptor-interacting serine/threonine-protein kinase 2
Humangene_id :	8767
Humanswissprot_no :	O43353
Mousegene_id :	192656
Mouseswissprot_no :	P58801
Immunogen :	The antiserum was produced against synthesized peptide derived from human RIPK2. AA range:146-195
Specificity :	RIP2 Polyclonal Antibody detects endogenous levels of RIP2 protein.
Formulation :	Liquid in PBS containing 50% glycerol, 0.5% BSA and 0.02% sodium azide.
Source :	Rabbit
Dilution :	Western Blot: 1/500 - 1/2000. Immunohistochemistry: 1/100 - 1/300. ELISA: 1/40000. Not yet tested in other applications.
Purification :	The antibody was affinity-purified from rabbit antiserum by affinity-chromatography using epitope-specific immunogen.
Concentration :	1 mg/ml
Storage_stability :	-20°C/1 year
Msds :	MSDS_Antibody.pdf
Other_name :	RIPK2; CARDIAK; RICK; RIP2; Receptor-interacting serine/threonine-protein kinase 2; CARD-containing interleukin-1 beta-converting enzyme-associated kinase; CARD-containing IL-1 beta ICE-kinase; RIP-like-interacting CLARP kinase; Receptor-in



Molecular
Weight :

61KD

Product Images



Western blot analysis of 3T3 lysis using RIP2 antibody.
Antibody was diluted at 1:500