

Rit1 Polyclonal Antibody

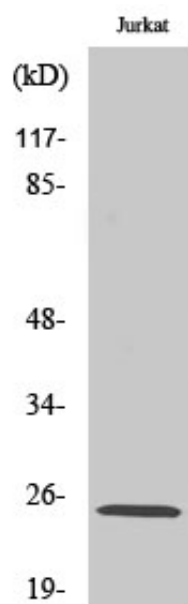
Catalog_no :	AT4149
Applications :	WB,ELISA
Reactivity :	Human,Mouse
Category :	抗原抗体
Size :	100µg/50µg/20µg
Gene_name :	RIT1
Protein_name :	GTP-binding protein Rit1
Humangene_id :	6016
Humanswissprot_no :	Q92963
Mousegene_id :	19769
Mouseswissprot_no :	P70426
Immunogen :	The antiserum was produced against synthesized peptide derived from human RIT1. AA range:170-219
Specificity :	Rit1 Polyclonal Antibody detects endogenous levels of Rit1 protein.
Formulation :	Liquid in PBS containing 50% glycerol, 0.5% BSA and 0.02% sodium azide.
Source :	Rabbit
Dilution :	Western Blot: 1/500 - 1/2000. ELISA: 1/10000. Not yet tested in other applications.
Purification :	The antibody was affinity-purified from rabbit antiserum by affinity-chromatography using epitope-specific immunogen.
Concentration :	1 mg/ml
Storage_stability :	-20°C/1 year
Msds :	MSDS_Antibody.pdf
Other_name :	RIT1; RIBB; RIT; ROC1; GTP-binding protein Rit1; Ras-like protein expressed in many tissues; Ras-like without CAAX protein 1
Molecular Weight :	25KD



专注二抗产品

Biodragon旗下品牌

Product Images



Western Blot analysis of various cells using Rit1 Polyclonal Antibody diluted at 1 : 500