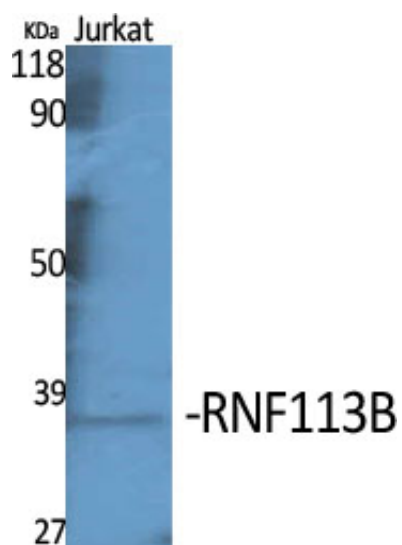




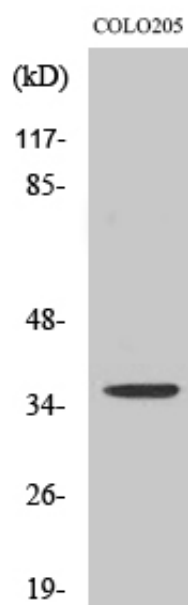
RNF113B Polyclonal Antibody

Catalog_no :	AT4153
Applications :	WB,ELISA
Reactivity :	Human
Category :	抗原抗体
Size :	100µg/50µg/20µg
Gene_name :	RNF113B
Protein_name :	RING finger protein 113B
Humangene_id :	140432
Humanswissprot_no :	Q8IZP6
Immunogen :	Synthesized peptide derived from the Internal region of human RNF113B.
Specificity :	RNF113B Polyclonal Antibody detects endogenous levels of RNF113B protein.
Formulation :	Liquid in PBS containing 50% glycerol, 0.5% BSA and 0.02% sodium azide.
Source :	Rabbit
Dilution :	Western Blot: 1/500 - 1/2000. ELISA: 1/10000. Not yet tested in other applications.
Purification :	The antibody was affinity-purified from rabbit antiserum by affinity-chromatography using epitope-specific immunogen.
Concentration :	1 mg/ml
Storage_stability :	-20°C/1 year
Msds :	MSDS_Antibody.pdf
Other_name :	RNF113B; RNF161; ZNF183L1; RING finger protein 113B; Zinc finger protein 183-like 1
Molecular Weight :	36KD

Product Images



Western Blot analysis of various cells using RNF113B Polyclonal Antibody



Western Blot analysis of 293 cells using RNF113B Polyclonal Antibody