

## Rock-2 Polyclonal Antibody

Catalog_no :	AT4163
Applications :	WB,ELISA
Reactivity :	Human,Mouse,Rat,Monkey
Category :	抗原抗体
Size :	100µg/50µg/20µg
Gene_name :	ROCK2
Protein_name :	Rho-associated protein kinase 2
Humangene_id :	<a href="#">9475</a>
Humanswissprot_no :	<a href="#">O75116</a>
Mousegene_id :	<a href="#">19878</a>
Mouseswissprot_no :	<a href="#">P70336</a>
Ratgene_id :	<a href="#">25537</a>
Ratswissprot_no :	<a href="#">Q62868</a>
Immunogen :	The antiserum was produced against synthesized peptide derived from human ROCK2. AA range:691-740
Specificity :	Rock-2 Polyclonal Antibody detects endogenous levels of Rock-2 protein.
Formulation :	Liquid in PBS containing 50% glycerol, 0.5% BSA and 0.02% sodium azide.
Source :	Rabbit
Dilution :	Western Blot: 1/500 - 1/2000. ELISA: 1/40000. Not yet tested in other applications.
Purification :	The antibody was affinity-purified from rabbit antiserum by affinity-chromatography using epitope-specific immunogen.
Concentration :	1 mg/ml
Storage_stability :	-20°C/1 year
Msds :	<a href="#">MSDS_Antibody.pdf</a>



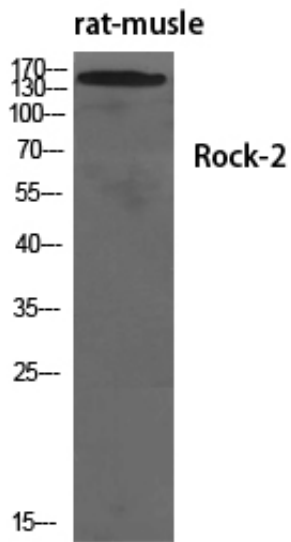
Other\_name : ROCK2; KIAA0619; Rho-associated protein kinase 2; Rho kinase 2; Rho-associated; coiled-coil-containing protein kinase 2; Rho-associated, coiled-coil-containing protein kinase II; ROCK-II; p164 ROCK-2

---

Molecular Weight : 165KD

---

## Product Images



Western Blot analysis of various cells using Rock-2 Polyclonal Antibody diluted at 1 : 1000