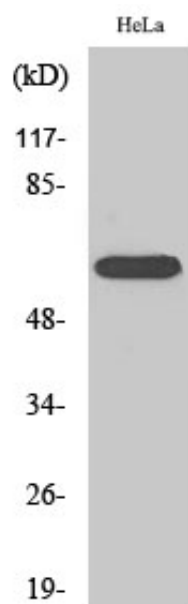


ROR α Polyclonal Antibody

Catalog_no :	AT4166
Applications :	WB,IHC-p,IF,ELISA
Reactivity :	Human,Monkey
Category :	抗原抗体
Size :	100 μ g/50 μ g/20 μ g
Gene_name :	RORA
Protein_name :	Nuclear receptor ROR-alpha
Humangene_id :	6095
Humanswissprot_no :	P35398
Immunogen :	The antiserum was produced against synthesized peptide derived from human RORA. AA range:6-55
Specificity :	ROR α Polyclonal Antibody detects endogenous levels of ROR α protein.
Formulation :	Liquid in PBS containing 50% glycerol, 0.5% BSA and 0.02% sodium azide.
Source :	Rabbit
Dilution :	Western Blot: 1/500 - 1/2000. Immunohistochemistry: 1/100 - 1/300. Immunofluorescence: 1/200 - 1/1000. ELISA: 1/40000. Not yet tested in other applications.
Purification :	The antibody was affinity-purified from rabbit antiserum by affinity-chromatography using epitope-specific immunogen.
Concentration :	1 mg/ml
Storage_stability :	-20°C/1 year
Msds :	MSDS_Antibody.pdf
Other_name :	RORA; NR1F1; RZRA; Nuclear receptor ROR-alpha; Nuclear receptor RZR-alpha; Nuclear receptor subfamily 1 group F member 1; Retinoid-related orphan receptor-alpha
Molecular Weight :	60KD

Product Images



Western Blot analysis of various cells using ROR α Polyclonal Antibody cells nucleus extracted by Minute TM Cytoplasmic and Nuclear Fractionation kit (SC-003, Inventbiotech, MN, USA).