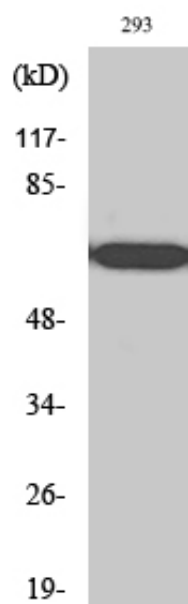


RPAP2 Polyclonal Antibody

Catalog_no :	AT4172
Applications :	WB,ELISA
Reactivity :	Human
Category :	抗原抗体
Size :	100µg/50µg/20µg
Gene_name :	RPAP2
Protein_name :	Putative RNA polymerase II subunit B1 CTD phosphatase RPAP2
Humangene_id :	79871
Humanswissprot_no :	Q8IXW5
Immunogen :	The antiserum was produced against synthesized peptide derived from human RPAP2. AA range:460-509
Specificity :	RPAP2 Polyclonal Antibody detects endogenous levels of RPAP2 protein.
Formulation :	Liquid in PBS containing 50% glycerol, 0.5% BSA and 0.02% sodium azide.
Source :	Rabbit
Dilution :	Western Blot: 1/500 - 1/2000. ELISA: 1/10000. Not yet tested in other applications.
Purification :	The antibody was affinity-purified from rabbit antiserum by affinity-chromatography using epitope-specific immunogen.
Concentration :	1 mg/ml
Storage_stability :	-20°C/1 year
Msds :	MSDS_Antibody.pdf
Other_name :	RPAP2; C1orf82; Putative RNA polymerase II subunit B1 CTD phosphatase RPAP2; RNA polymerase II-associated protein 2
Molecular Weight :	70KD

Product Images



Western Blot analysis of various cells using RPAP2 Polyclonal Antibody