

Rpb1 Polyclonal Antibody

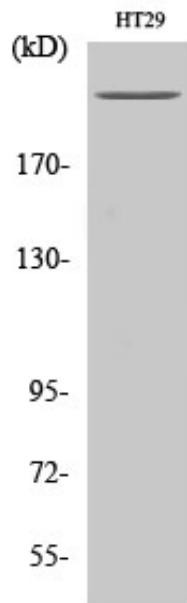
Catalog_no :	AT4173
Applications :	WB,IHC-p,IF,ELISA
Reactivity :	Human,Mouse,Rat,Monkey
Category :	抗原抗体
Size :	100µg/50µg/20µg
Gene_name :	POLR2A
Protein_name :	DNA-directed RNA polymerase II subunit RPB1
Humangene_id :	5430
Humanswissprot_no :	P24928
Mousegene_id :	20020
Mouseswissprot_no :	P08775
Immunogen :	The antiserum was produced against synthesized peptide derived from human POLR2A. AA range:1585-1634
Specificity :	Rpb1 Polyclonal Antibody detects endogenous levels of Rpb1 protein.
Formulation :	Liquid in PBS containing 50% glycerol, 0.5% BSA and 0.02% sodium azide.
Source :	Rabbit
Dilution :	Western Blot: 1/500 - 1/2000. Immunohistochemistry: 1/100 - 1/300. Immunofluorescence: 1/200 - 1/1000. ELISA: 1/10000. Not yet tested in other applications.
Purification :	The antibody was affinity-purified from rabbit antiserum by affinity-chromatography using epitope-specific immunogen.
Concentration :	1 mg/ml
Storage_stability :	-20°C/1 year
Msds :	MSDS_Antibody.pdf
Other_name :	POLR2A; POLR2; DNA-directed RNA polymerase II subunit RPB1; RNA polymerase II subunit B1; DNA-directed RNA polymerase II subunit A; DNA-directed RNA polymerase III largest subunit; RNA-directed RNA polymerase II subunit RPB1



Molecular
Weight :

250KD

Product Images



Western Blot analysis of various cells using Rpb1 Polyclonal Antibody diluted at 1 : 1000 cells nucleus extracted by Minute TM Cytoplasmic and Nuclear Fractionation kit (SC-003, Inventbiotech, MN, USA).