



RRP22 Polyclonal Antibody

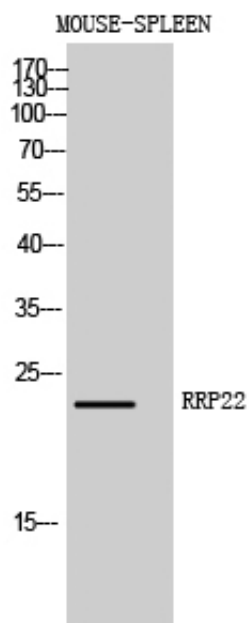
Catalog_no :	AT4177
Applications :	WB,ELISA
Reactivity :	Human,Mouse
Category :	抗原抗体
Size :	100µg/50µg/20µg
Gene_name :	RASL10A
Protein_name :	Ras-like protein family member 10A
Humangene_id :	10633
Humanswissprot_no :	Q92737
Mousegene_id :	75668
Mouseswissprot_no :	Q8K5A4
Immunogen :	The antiserum was produced against synthesized peptide derived from human RASL10A. AA range:107-156
Specificity :	RRP22 Polyclonal Antibody detects endogenous levels of RRP22 protein.
Formulation :	Liquid in PBS containing 50% glycerol, 0.5% BSA and 0.02% sodium azide.
Source :	Rabbit
Dilution :	Western Blot: 1/500 - 1/2000. ELISA: 1/40000. Not yet tested in other applications.
Purification :	The antibody was affinity-purified from rabbit antiserum by affinity-chromatography using epitope-specific immunogen.
Concentration :	1 mg/ml
Storage_stability :	-20°C/1 year
Msds :	MSDS_Antibody.pdf
Other_name :	RASL10A; RRP22; Ras-like protein family member 10A; Ras-like protein RRP22; Ras-related protein on chromosome 22
Molecular Weight :	30KD



专注二抗产品

Biodragon旗下品牌

Product Images



Western Blot analysis of MOUSE-SPLEEN cells using RRP22 Polyclonal Antibody diluted at 1 : 1000