

RRS1 Polyclonal Antibody

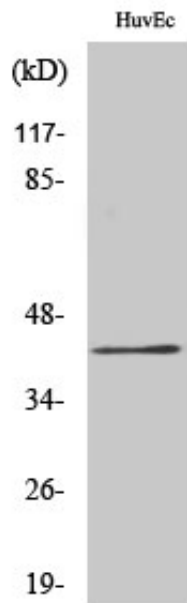
Catalog_no :	<u>AT4178</u>
Applications :	<u>WB,IHC-p,ELISA</u>
Reactivity :	<u>Human,Mouse,Rat</u>
Category :	<u>抗原抗体</u>
Size :	<u>100µg/50µg/20µg</u>
Gene_name :	<u>RRS1</u>
Protein_name :	<u>Ribosome biogenesis regulatory protein homolog</u>
Humangene_id :	<u>23212</u>
Humanswissprot_no :	<u>Q15050</u>
Mousegene_id :	<u>59014</u>
Mouseswissprot_no :	<u>Q9CYH6</u>
Ratgene_id :	<u>297784</u>
Ratswissprot_no :	<u>A1A5P2</u>
Immunogen :	<u>The antiserum was produced against synthesized peptide derived from human RRS1. AA range:254-303</u>
Specificity :	<u>RRS1 Polyclonal Antibody detects endogenous levels of RRS1 protein.</u>
Formulation :	<u>Liquid in PBS containing 50% glycerol, 0.5% BSA and 0.02% sodium azide.</u>
Source :	<u>Rabbit</u>
Dilution :	<u>Western Blot: 1/500 - 1/2000. Immunohistochemistry: 1/100 - 1/300. ELISA: 1/10000. Not yet tested in other applications.</u>
Purification :	<u>The antibody was affinity-purified from rabbit antiserum by affinity-chromatography using epitope-specific immunogen.</u>
Concentration :	<u>1 mg/ml</u>
Storage_stability :	<u>-20°C/1 year</u>
Msds :	<u>MSDS_Antibody.pdf</u>



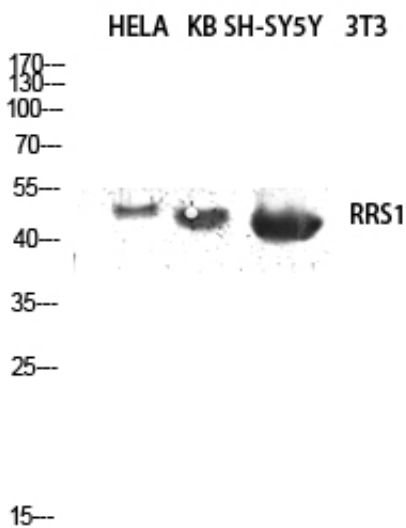
Other_name : RRS1; KIAA0112; RRR; Ribosome biogenesis regulatory protein homolog

Molecular Weight : 41KD

Product Images



Western Blot analysis of various cells using RRS1 Polyclonal Antibody diluted at 1 : 2000 cells nucleus extracted by Minute TM Cytoplasmic and Nuclear Fractionation kit (SC-003, Inventbiotech, MN, USA).



Western blot analysis of HELA KB SH-SY5Y lysis using RRS1 antibody. Antibody was diluted at 1:2000 cells nucleus extracted by Minute TM Cytoplasmic and Nuclear Fractionation kit (SC-003, Inventbiotech, MN, USA).