

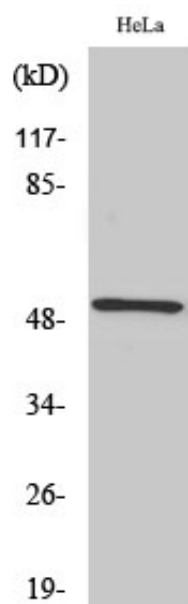
RSAD1 Polyclonal Antibody

Catalog_no :	AT4179
Applications :	WB,IHC-p,ELISA
Reactivity :	Human,Mouse
Category :	抗原抗体
Size :	100µg/50µg/20µg
Gene_name :	RSAD1
Protein_name :	Radical S-adenosyl methionine domain-containing protein 1 mitochondrial
Humangene_id :	55316
Humanswissprot_no :	Q9HA92
Mousegene_id :	237926
Mouseswissprot_no :	Q5SUV1
Immunogen :	The antiserum was produced against synthesized peptide derived from human RSAD1. AA range:298-347
Specificity :	RSAD1 Polyclonal Antibody detects endogenous levels of RSAD1 protein.
Formulation :	Liquid in PBS containing 50% glycerol, 0.5% BSA and 0.02% sodium azide.
Source :	Rabbit
Dilution :	Western Blot: 1/500 - 1/2000. Immunohistochemistry: 1/100 - 1/300. ELISA: 1/5000. Not yet tested in other applications.
Purification :	The antibody was affinity-purified from rabbit antiserum by affinity-chromatography using epitope-specific immunogen.
Concentration :	1 mg/ml
Storage_stability :	-20°C/1 year
Msds :	MSDS_Antibody.pdf
Other_name :	RSAD1; Radical S-adenosyl methionine domain-containing protein 1; mitochondrial; Oxygen-independent coproporphyrinogen-III oxidase-like protein RSAD1
Molecular	52KD



Weight :

Product Images



Western Blot analysis of various cells using RSAD1 Polyclonal Antibody