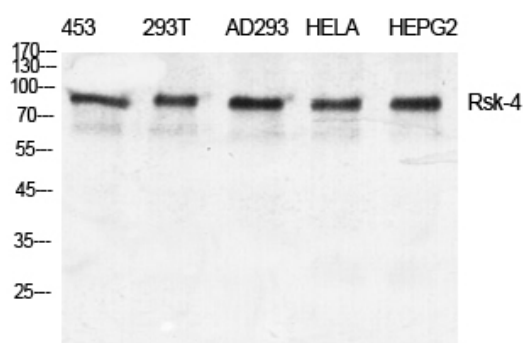


Rsk-4 Polyclonal Antibody

Catalog_no :	AT4185
Applications :	WB,IHC-p,ELISA
Reactivity :	Human
Category :	抗原抗体
Size :	100µg/50µg/20µg
Gene_name :	RPS6KA6
Protein_name :	Ribosomal protein S6 kinase alpha-6
Humangene_id :	27330
Humanswissprot_no :	Q9UK32
Immunogen :	The antiserum was produced against synthesized peptide derived from human S6K-alpha6. AA range:661-710
Specificity :	Rsk-4 Polyclonal Antibody detects endogenous levels of Rsk-4 protein.
Formulation :	Liquid in PBS containing 50% glycerol, 0.5% BSA and 0.02% sodium azide.
Source :	Rabbit
Dilution :	Western Blot: 1/500 - 1/2000. Immunohistochemistry: 1/100 - 1/300. ELISA: 1/10000. Not yet tested in other applications.
Purification :	The antibody was affinity-purified from rabbit antiserum by affinity-chromatography using epitope-specific immunogen.
Concentration :	1 mg/ml
Storage_stability :	-20°C/1 year
Msds :	MSDS_Antibody.pdf
Other_name :	RPS6KA6; RSK4; Ribosomal protein S6 kinase alpha-6; S6K-alpha-6; 90 kDa ribosomal protein S6 kinase 6; p90-RSK 6; p90RSK6; Ribosomal S6 kinase 4; RSK-4; pp90RSK4
Molecular Weight :	84KD

Product Images



Western Blot analysis of various cells using Rsk-4 Polyclonal Antibody diluted at 1 : 500