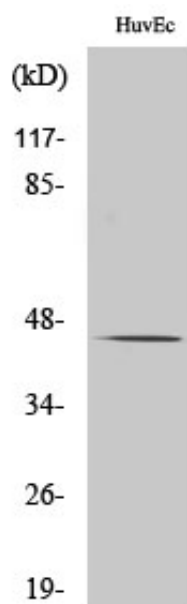




RUNX3 Polyclonal Antibody

Catalog_no :	AT4194
Applications :	WB,ELISA
Reactivity :	Human,Mouse
Category :	抗原抗体
Size :	100µg/50µg/20µg
Gene_name :	RUNX3
Protein_name :	Runt-related transcription factor 3
Humangene_id	864
:	
Humanswissprot	Q13761
_no :	
Mouseswissprot	Q64131
_no :	
Immunogen :	The antiserum was produced against synthesized peptide derived from human RUNX3. AA range:133-182
Specificity :	RUNX3 Polyclonal Antibody detects endogenous levels of RUNX3 protein.
Formulation :	Liquid in PBS containing 50% glycerol, 0.5% BSA and 0.02% sodium azide.
Source :	Rabbit
Dilution :	Western Blot: 1/500 - 1/2000. ELISA: 1/40000. Not yet tested in other applications.
Purification :	The antibody was affinity-purified from rabbit antiserum by affinity-chromatography using epitope-specific immunogen.
Concentration :	1 mg/ml
Storage_stability	-20°C/1 year
:	
Msds :	MSDS_Antibody.pdf
Other_name :	RUNX3; AML2; CBFA3; PEBP2A3; Runt-related transcription factor 3; Acute myeloid leukemia 2 protein; Core-binding factor subunit alpha-3; CBF-alpha-3; Oncogene AML-2; Polyomavirus enhancer-binding protein 2 alpha C subunit; PEA2-alpha C; PEB
Molecular Weight :	44KD

Product Images



Western Blot analysis of various cells using RUNX3 Polyclonal Antibody diluted at 1 : 500 cells nucleus extracted by Minute TM Cytoplasmic and Nuclear Fractionation kit (SC-003, Invent biotech, MN, USA).