

RyR-2 Polyclonal Antibody

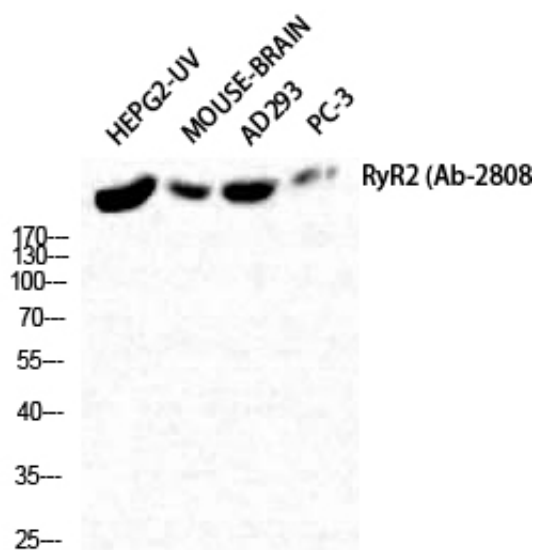
Catalog_no :	AT4196
Applications :	WB,IHC-p,IF,ELISA
Reactivity :	Human,Mouse,Rat
Category :	抗原抗体
Size :	100µg/50µg/20µg
Gene_name :	RYR2
Protein_name :	Ryanodine receptor 2
Humangene_id :	6262
Humanswissprot_no :	Q92736
Mousegene_id :	20191
Mouseswissprot_no :	E9Q401
Ratgene_id :	689560
Ratswissprot_no :	B0LPN4
Immunogen :	The antiserum was produced against synthesized peptide derived from human RyR2. AA range:2774-2823
Specificity :	RyR-2 Polyclonal Antibody detects endogenous levels of RyR-2 protein.
Formulation :	Liquid in PBS containing 50% glycerol, 0.5% BSA and 0.02% sodium azide.
Source :	Rabbit
Dilution :	Immunohistochemistry: 1/100 - 1/300. Immunofluorescence: 1/200 - 1/1000. ELISA: 1/5000. Not yet tested in other applications.
Purification :	The antibody was affinity-purified from rabbit antiserum by affinity-chromatography using epitope-specific immunogen.
Concentration :	1 mg/ml
Storage_stability :	-20°C/1 year
Msds :	MSDS_Antibody.pdf



Other_name : RYR2; Ryanodine receptor 2; RYR-2; RyR2; hRYR-2; Cardiac muscle ryanodine receptor;
Cardiac muscle ryanodine receptor-calcium release channel; Type 2 ryanodine receptor

Molecular Weight : 200-300KD

Product Images



Western Blot analysis of HepG2-UV, MOUSE-BRAIN, AD293, PC-3 cells using RyR2 Polyclonal Antibody diluted at 1 : 2000