

S-100A10 Polyclonal Antibody

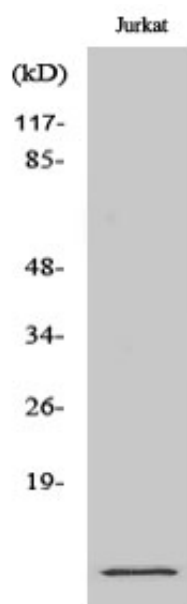
Catalog_no :	AT4198
Applications :	WB,IHC-p,ELISA
Reactivity :	Human,Mouse,Rat
Category :	抗原抗体
Size :	100µg/50µg/20µg
Gene_name :	S100A10
Protein_name :	Protein S100-A10
Humangene_id :	6281
Humanswissprot_no :	P60903
Mousegene_id :	20194
Mouseswissprot_no :	P08207
Ratgene_id :	81778
Ratswissprot_no :	P05943
Immunogen :	The antiserum was produced against synthesized peptide derived from human S-100A10. AA range:3-52
Specificity :	S-100A10 Polyclonal Antibody detects endogenous levels of S-100A10 protein.
Formulation :	Liquid in PBS containing 50% glycerol, 0.5% BSA and 0.02% sodium azide.
Source :	Rabbit
Dilution :	Western Blot: 1/500 - 1/2000. Immunohistochemistry: 1/100 - 1/300. ELISA: 1/40000. Not yet tested in other applications.
Purification :	The antibody was affinity-purified from rabbit antiserum by affinity-chromatography using epitope-specific immunogen.
Concentration :	1 mg/ml
Storage_stability :	-20°C/1 year
Msds :	MSDS_Antibody.pdf



Other_name : S100A10; ANX2LG; CAL1L; CLP11; Protein S100-A10; Calpactin I light chain; Calpactin-1 light chain; Cellular ligand of annexin II; S100 calcium-binding protein A10; p10 protein; p11

Molecular Weight : 11KD

Product Images



Western Blot analysis of various cells using S-100A10 Polyclonal Antibody