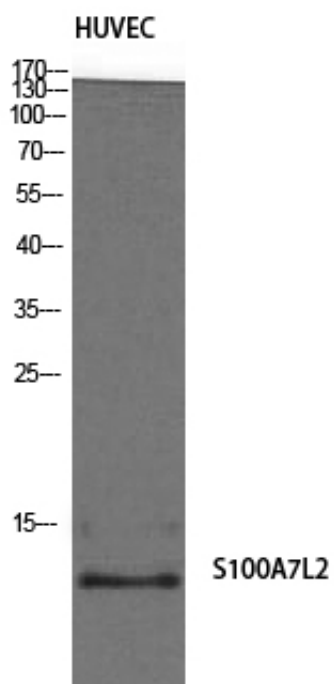




S-100A7L2 Polyclonal Antibody

Catalog_no :	AT4202
Applications :	WB,ELISA
Reactivity :	Human
Category :	抗原抗体
Size :	100µg/50µg/20µg
Gene_name :	S100A7L2
Protein_name :	Protein S100-A7-like 2
Humangene_id :	645922
Humanswissprot_no :	Q5SY68
Immunogen :	The antiserum was produced against synthesized peptide derived from human S100A7L2. AA range:38-87
Specificity :	S-100A7L2 Polyclonal Antibody detects endogenous levels of S-100A7L2 protein.
Formulation :	Liquid in PBS containing 50% glycerol, 0.5% BSA and 0.02% sodium azide.
Source :	Rabbit
Dilution :	Western Blot: 1/500 - 1/2000. ELISA: 1/10000. Not yet tested in other applications.
Purification :	The antibody was affinity-purified from rabbit antiserum by affinity-chromatography using epitope-specific immunogen.
Concentration :	1 mg/ml
Storage_stability :	-20°C/1 year
Msds :	MSDS_Antibody.pdf
Other_name :	S100A7L2; S100A7B; Protein S100-A7-like 2; S100 calcium-binding protein A7-like 2
Molecular Weight :	11KD

Product Images



Western Blot analysis of HuvEc cells using S-100A7L2 Polyclonal Antibody