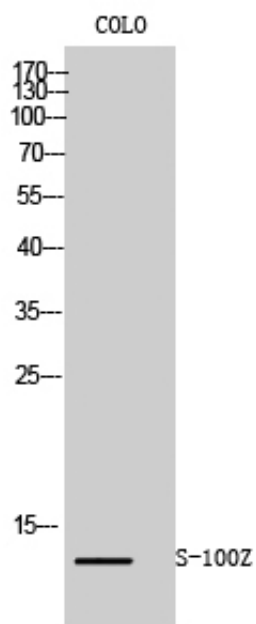




S-100Z Polyclonal Antibody

Catalog_no :	AT4204
Applications :	WB,IHC-p,ELISA
Reactivity :	Human
Category :	抗原抗体
Size :	100µg/50µg/20µg
Gene_name :	S100Z
Protein_name :	Protein S100-Z
Humangene_id :	170591
Humanswissprot_no :	Q8WXG8
Immunogen :	The antiserum was produced against synthesized peptide derived from human S100Z. AA range:2-51
Specificity :	S-100Z Polyclonal Antibody detects endogenous levels of S-100Z protein.
Formulation :	Liquid in PBS containing 50% glycerol, 0.5% BSA and 0.02% sodium azide.
Source :	Rabbit
Dilution :	Western Blot: 1/500 - 1/2000. Immunohistochemistry: 1/100 - 1/300. ELISA: 1/20000. Not yet tested in other applications.
Purification :	The antibody was affinity-purified from rabbit antiserum by affinity-chromatography using epitope-specific immunogen.
Concentration :	1 mg/ml
Storage_stability :	-20°C/1 year
Msds :	MSDS_Antibody.pdf
Other_name :	S100Z; Protein S100-Z; S100 calcium-binding protein Z
Molecular Weight :	12KD

Product Images



Western Blot analysis of COLO cells using S-100Z Polyclonal Antibody