

SAE1 Polyclonal Antibody

Catalog_no :	AT4207
Applications :	WB,IHC-p,IF,ELISA
Reactivity :	Human,Mouse,Rat
Category :	抗原抗体
Size :	100µg/50µg/20µg
Gene_name :	SAE1
Protein_name :	SUMO-activating enzyme subunit 1
Humangene_id :	10055
Humanswissprot_no :	Q9UBE0
Mousegene_id :	56459
Mouseswissprot_no :	Q9R1T2
Ratgene_id :	308384
Ratswissprot_no :	Q6AXQ0
Immunogen :	The antiserum was produced against synthesized peptide derived from human AOS1. AA range:221-270
Specificity :	SAE1 Polyclonal Antibody detects endogenous levels of SAE1 protein.
Formulation :	Liquid in PBS containing 50% glycerol, 0.5% BSA and 0.02% sodium azide.
Source :	Rabbit
Dilution :	Western Blot: 1/500 - 1/2000. Immunohistochemistry: 1/100 - 1/300. Immunofluorescence: 1/200 - 1/1000. ELISA: 1/20000. Not yet tested in other applications.
Purification :	The antibody was affinity-purified from rabbit antiserum by affinity-chromatography using epitope-specific immunogen.
Concentration :	1 mg/ml
Storage_stability :	-20°C/1 year

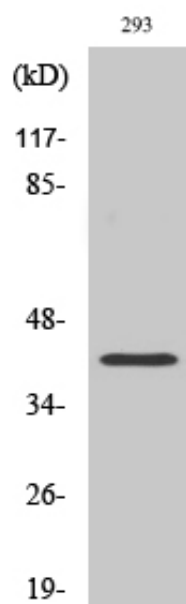


Msd : MSDS_Antibody.pdf

Other_name : SAE1; AOS1; SUA1; UBLE1A; SUMO-activating enzyme subunit 1; Ubiquitin-like 1-activating enzyme E1A

Molecular Weight : 38KD

Product Images



Western Blot analysis of various cells using SAE1 Polyclonal Antibody cells nucleus extracted by Minute TM Cytoplasmic and Nuclear Fractionation kit (SC-003, Inventbiotech, MN, USA).