



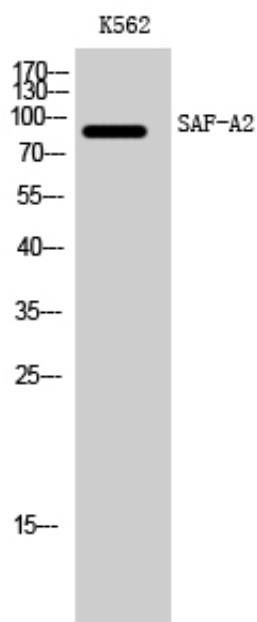
SAF-A2 Polyclonal Antibody

| | |
|---------------------|--|
| Catalog_no : | AT4208 |
| Applications : | WB,IHC-p,ELISA |
| Reactivity : | Human,Mouse |
| Category : | 抗原抗体 |
| Size : | 100µg/50µg/20µg |
| Gene_name : | HNRNPUL2 |
| Protein_name : | Heterogeneous nuclear ribonucleoprotein U-like protein 2 |
| Humangene_id : | 221092 |
| Humanswissprot_no : | Q1KMD3 |
| Mousegene_id : | 68693 |
| Mouseswissprot_no : | Q00PI9 |
| Immunogen : | The antiserum was produced against synthesized peptide derived from human HNRNPUL2. AA range:601-650 |
| Specificity : | SAF-A2 Polyclonal Antibody detects endogenous levels of SAF-A2 protein. |
| Formulation : | Liquid in PBS containing 50% glycerol, 0.5% BSA and 0.02% sodium azide. |
| Source : | Rabbit |
| Dilution : | Western Blot: 1/500 - 1/2000. Immunohistochemistry: 1/100 - 1/300. ELISA: 1/40000. Not yet tested in other applications. |
| Purification : | The antibody was affinity-purified from rabbit antiserum by affinity-chromatography using epitope-specific immunogen. |
| Concentration : | 1 mg/ml |
| Storage_stability : | -20°C/1 year |
| Msds : | MSDS_Antibody.pdf |
| Other_name : | HNRNPUL2; HNRPUL2; Heterogeneous nuclear ribonucleoprotein U-like protein 2; Scaffold-attachment factor A2; SAF-A2 |
| Molecular | 85KD |



Weight :

Product Images



Western Blot analysis of K562 cells using SAF-A2 Polyclonal Antibody cells nucleus extracted by Minute TM Cytoplasmic and Nuclear Fractionation kit (SC-003, Inventbiotech, MN, USA).