



Sam 68 Polyclonal Antibody

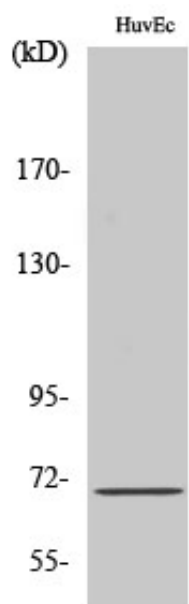
Catalog_no :	AT4209
Applications :	WB,ELISA
Reactivity :	Human,Mouse,Rat
Category :	抗原抗体
Size :	100µg/50µg/20µg
Gene_name :	KHDRBS1
Protein_name :	KH domain-containing RNA-binding signal transduction-associated protein 1
Humangene_id :	10657
Humanswissprot_no :	Q07666
Mousegene_id :	20218
Mouseswissprot_no :	Q60749
Ratgene_id :	117268
Ratswissprot_no :	Q91V33
Immunogen :	The antiserum was produced against synthesized peptide derived from human Sam 68. AA range:96-145
Specificity :	Sam 68 Polyclonal Antibody detects endogenous levels of Sam 68 protein.
Formulation :	Liquid in PBS containing 50% glycerol, 0.5% BSA and 0.02% sodium azide.
Source :	Rabbit
Dilution :	Western Blot: 1/500 - 1/2000. ELISA: 1/10000. Not yet tested in other applications.
Purification :	The antibody was affinity-purified from rabbit antiserum by affinity-chromatography using epitope-specific immunogen.
Concentration :	1 mg/ml
Storage_stability :	-20°C/1 year
Msds :	MSDS_Antibody.pdf



Other_name : KHDRBS1; SAM68; KH domain-containing; RNA-binding, signal transduction-associated protein 1; GAP-associated tyrosine phosphoprotein p62; Src-associated in mitosis 68 kDa protein; Sam68; p21 Ras GTPase-activating protein-associated p62; p68

Molecular Weight : 68KD

Product Images



Western Blot analysis of various cells using Sam 68 Polyclonal Antibody