



SAP 14 Polyclonal Antibody

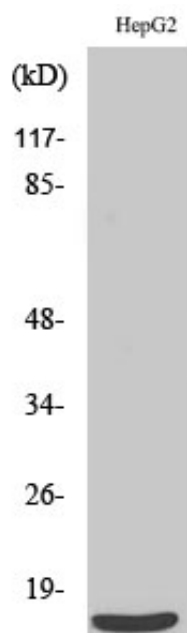
Catalog_no :	AT4210
Applications :	WB,ELISA
Reactivity :	Human,Mouse
Category :	抗原抗体
Size :	100µg/50µg/20µg
Gene_name :	SF3B14
Protein_name :	Pre-mRNA branch site protein p14
Humangene_id :	51639
Humanswissprot_no :	Q9Y3B4
Mousegene_id :	66055
Mouseswissprot_no :	P59708
Immunogen :	The antiserum was produced against synthesized peptide derived from human SF3B14. AA range:76-125
Specificity :	SAP 14 Polyclonal Antibody detects endogenous levels of SAP 14 protein.
Formulation :	Liquid in PBS containing 50% glycerol, 0.5% BSA and 0.02% sodium azide.
Source :	Rabbit
Dilution :	Western Blot: 1/500 - 1/2000. ELISA: 1/40000. Not yet tested in other applications.
Purification :	The antibody was affinity-purified from rabbit antiserum by affinity-chromatography using epitope-specific immunogen.
Concentration :	1 mg/ml
Storage_stability :	-20°C/1 year
Msds :	MSDS_Antibody.pdf
Other_name :	SF3B14; CGI-110; HSPC175; HT006; Pre-mRNA branch site protein p14; SF3b 14 kDa subunit
Molecular Weight :	20KD



专注二抗产品

Biodragon旗下品牌

Product Images



Western Blot analysis of various cells using SAP 14 Polyclonal Antibody cells nucleus extracted by Minute TM Cytoplasmic and Nuclear Fractionation kit (SC-003, Inventbiotech, MN, USA).