

SAPAP1 Polyclonal Antibody

| | |
|---------------------|--|
| Catalog_no : | AT4212 |
| Applications : | WB,IHC-p,IF,ELISA |
| Reactivity : | Human,Mouse,Rat |
| Category : | 抗原抗体 |
| Size : | 100µg/50µg/20µg |
| Gene_name : | DLGAP1 |
| Protein_name : | Disks large-associated protein 1 |
| Humangene_id : | 9229 |
| Humanswissprot_no : | O14490 |
| Mousegene_id : | 224997 |
| Mouseswissprot_no : | Q9D415 |
| Ratgene_id : | 65040 |
| Ratswissprot_no : | P97836 |
| Immunogen : | The antiserum was produced against synthesized peptide derived from human DLGP1. AA range:791-840 |
| Specificity : | SAPAP1 Polyclonal Antibody detects endogenous levels of SAPAP1 protein. |
| Formulation : | Liquid in PBS containing 50% glycerol, 0.5% BSA and 0.02% sodium azide. |
| Source : | Rabbit |
| Dilution : | Western Blot: 1/500 - 1/2000. Immunohistochemistry: 1/100 - 1/300. Immunofluorescence: 1/200 - 1/1000. ELISA: 1/40000. Not yet tested in other applications. |
| Purification : | The antibody was affinity-purified from rabbit antiserum by affinity-chromatography using epitope-specific immunogen. |
| Concentration : | 1 mg/ml |
| Storage_stability : | -20°C/1 year |

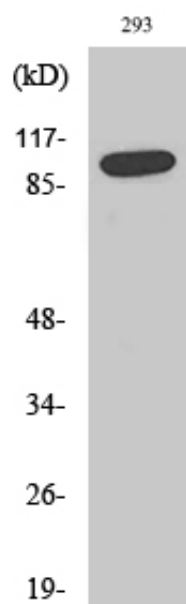


MsdS : [MSDS_Antibody.pdf](#)

Other_name : DLGAP1; DAP1; GKAP; Disks large-associated protein 1; DAP-1; Guanylate kinase-associated protein; hGKAP; PSD-95/SAP90-binding protein 1; SAP90/PSD-95-associated protein 1; SAPAP1

Molecular Weight : 108KD

Product Images



Western Blot analysis of various cells using SAPAP1 Polyclonal Antibody