

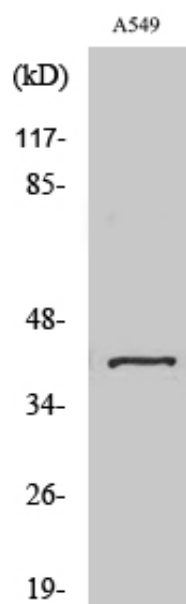
Sarcoglycan- β Polyclonal Antibody

Catalog_no :	AT4216
Applications :	WB,IHC-p,ELISA
Reactivity :	Human,Mouse
Category :	抗原抗体
Size :	100 μ g/50 μ g/20 μ g
Gene_name :	SGCB
Protein_name :	Beta-sarcoglycan
Humangene_id :	6443
Humanswissprot_no :	Q16585
Mousegene_id :	24051
Mouseswissprot_no :	P82349
Immunogen :	The antiserum was produced against synthesized peptide derived from human Sarcoglycan-beta. AA range:87-136
Specificity :	Sarcoglycan- β Polyclonal Antibody detects endogenous levels of Sarcoglycan- β protein.
Formulation :	Liquid in PBS containing 50% glycerol, 0.5% BSA and 0.02% sodium azide.
Source :	Rabbit
Dilution :	Western Blot: 1/500 - 1/2000. Immunohistochemistry: 1/100 - 1/300. ELISA: 1/40000. Not yet tested in other applications.
Purification :	The antibody was affinity-purified from rabbit antiserum by affinity-chromatography using epitope-specific immunogen.
Concentration :	1 mg/ml
Storage_stability :	-20°C/1 year
Msds :	MSDS_Antibody.pdf
Other_name :	SGCB; Beta-sarcoglycan; Beta-SG; 43 kDa dystrophin-associated glycoprotein; 43DAG; A3b
Molecular	43KD



Weight :

Product Images



Western Blot analysis of various cells using Sarcoglycan- β Polyclonal Antibody