



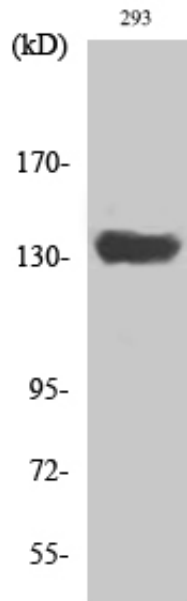
SCAF1 Polyclonal Antibody

Catalog_no :	AT4217
Applications :	WB,ELISA
Reactivity :	Human,Mouse
Category :	抗原抗体
Size :	100µg/50µg/20µg
Gene_name :	SCAF1
Protein_name :	Splicing factor arginine/serine-rich 19
Humangene_id :	58506
Humanswissprot_no :	Q9H7N4
Mousegene_id :	233208
Mouseswissprot_no :	Q5U4C3
Immunogen :	The antiserum was produced against synthesized peptide derived from human SFRS19. AA range:41-90
Specificity :	SCAF1 Polyclonal Antibody detects endogenous levels of SCAF1 protein.
Formulation :	Liquid in PBS containing 50% glycerol, 0.5% BSA and 0.02% sodium azide.
Source :	Rabbit
Dilution :	Western Blot: 1/500 - 1/2000. ELISA: 1/40000. Not yet tested in other applications.
Purification :	The antibody was affinity-purified from rabbit antiserum by affinity-chromatography using epitope-specific immunogen.
Concentration :	1 mg/ml
Storage_stability :	-20°C/1 year
Msds :	MSDS_Antibody.pdf
Other_name :	SCAF1; SFRS19; SRA1; Splicing factor; arginine/serine-rich 19; SR-related and CTD-associated factor 1; SR-related-CTD-associated factor; SCAF; Serine arginine-rich pre-mRNA splicing factor SR-A1; SR-A1
Molecular	140KD



Weight :

Product Images



Western Blot analysis of various cells using SCAF1 Polyclonal Antibody diluted at 1 : 2000 cells nucleus extracted by Minute TM Cytoplasmic and Nuclear Fractionation kit (SC-003, Inventbiotech, MN, USA).