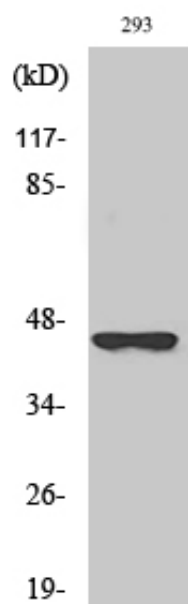


## SCCA2 Polyclonal Antibody

Catalog_no :	AT4220
Applications :	WB,ELISA
Reactivity :	Human
Category :	抗原抗体
Size :	100µg/50µg/20µg
Gene_name :	SERPINB4
Protein_name :	Serpin B4
Humangene_id :	<a href="#">6318</a>
Humanswissprot_no :	<a href="#">P48594</a>
Immunogen :	The antiserum was produced against synthesized peptide derived from human SERPINB4. AA range:261-310
Specificity :	SCCA2 Polyclonal Antibody detects endogenous levels of SCCA2 protein.
Formulation :	Liquid in PBS containing 50% glycerol, 0.5% BSA and 0.02% sodium azide.
Source :	Rabbit
Dilution :	Western Blot: 1/500 - 1/2000. ELISA: 1/5000. Not yet tested in other applications.
Purification :	The antibody was affinity-purified from rabbit antiserum by affinity-chromatography using epitope-specific immunogen.
Concentration :	1 mg/ml
Storage_stability :	-20°C/1 year
Msds :	MSDS_Antibody.pdf
Other_name :	SERPINB4; PI11; SCCA2; Serpin B4; Leupin; Peptidase inhibitor 11; PI-11; Squamous cell carcinoma antigen 2; SCCA-2
Molecular Weight :	45KD

## Product Images



Western Blot analysis of various cells using SCCA2 Polyclonal Antibody