

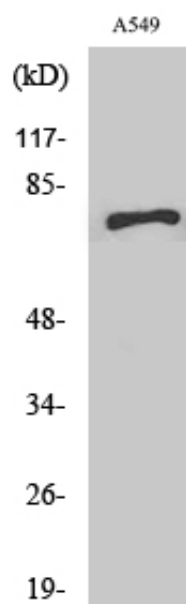
SCFD1 Polyclonal Antibody

| | |
|---------------------|---|
| Catalog_no : | AT4221 |
| Applications : | WB,ELISA |
| Reactivity : | Human,Mouse,Rat |
| Category : | 抗原抗体 |
| Size : | 100µg/50µg/20µg |
| Gene_name : | SCFD1 |
| Protein_name : | Sec1 family domain-containing protein 1 |
| Humangene_id : | 23256 |
| Humanswissprot_no : | Q8WVM8 |
| Mousegene_id : | 76983 |
| Mouseswissprot_no : | Q8BRF7 |
| Ratgene_id : | 54350 |
| Ratswissprot_no : | Q62991 |
| Immunogen : | The antiserum was produced against synthesized peptide derived from human SCFD1. AA range:533-582 |
| Specificity : | SCFD1 Polyclonal Antibody detects endogenous levels of SCFD1 protein. |
| Formulation : | Liquid in PBS containing 50% glycerol, 0.5% BSA and 0.02% sodium azide. |
| Source : | Rabbit |
| Dilution : | Western Blot: 1/500 - 1/2000. ELISA: 1/10000. Not yet tested in other applications. |
| Purification : | The antibody was affinity-purified from rabbit antiserum by affinity-chromatography using epitope-specific immunogen. |
| Concentration : | 1 mg/ml |
| Storage_stability : | -20°C/1 year |
| Msds : | MSDS_Antibody.pdf |



Other_name : SCFD1; C14orf163; KIAA0917; STXBP1L2; FKSG23; Sec1 family domain-containing protein 1; SLY1 homolog; Sly1p; Syntaxin-binding protein 1-like 2

Product Images



Western Blot analysis of various cells using SCFD1 Polyclonal Antibody