

## SDHA Polyclonal Antibody

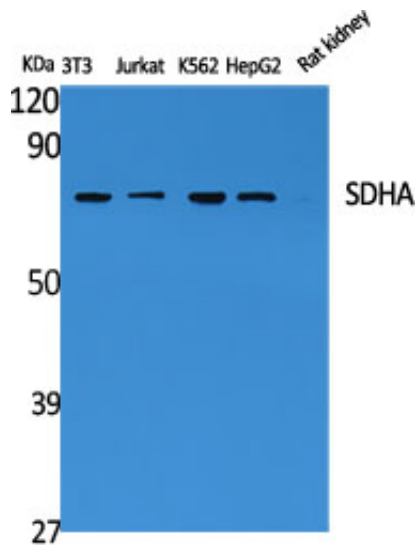
Catalog_no :	AT4226
Applications :	WB,ELISA
Reactivity :	Human,Mouse,Rat
Category :	抗原抗体
Size :	100µg/50µg/20µg
Gene_name :	SDHA
Protein_name :	Succinate dehydrogenase [ubiquinone] flavoprotein subunit mitochondrial
Humangene_id :	<a href="#">6389</a>
Humanswissprot_no :	<a href="#">P31040</a>
Mousegene_id :	<a href="#">66945</a>
Mouseswissprot_no :	<a href="#">Q8K2B3</a>
Ratgene_id :	<a href="#">157074</a>
Ratswissprot_no :	<a href="#">Q920L2</a>
Immunogen :	The antiserum was produced against synthesized peptide derived from human SDHA. AA range:551-600
Specificity :	SDHA Polyclonal Antibody detects endogenous levels of SDHA protein.
Formulation :	Liquid in PBS containing 50% glycerol, 0.5% BSA and 0.02% sodium azide.
Source :	Rabbit
Dilution :	Western Blot: 1/500 - 1/2000. ELISA: 1/10000. Not yet tested in other applications.
Purification :	The antibody was affinity-purified from rabbit antiserum by affinity-chromatography using epitope-specific immunogen.
Concentration :	1 mg/ml
Storage_stability :	-20°C/1 year
Msds :	<a href="#">MSDS_Antibody.pdf</a>



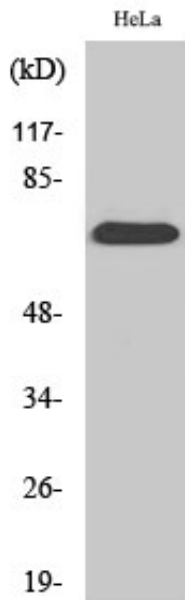
Other\_name : SDHA; SDH2; SDHF; Succinate dehydrogenase [ubiquinone] flavoprotein subunit; mitochondrial; Flavoprotein subunit of complex II; Fp

Molecular Weight : 70KD

## Product Images



Western Blot analysis of various cells using SDHA Polyclonal Antibody diluted at 1 : 2000



Western Blot analysis of HepG2 cells using SDHA Polyclonal Antibody diluted at 1 : 2000