

SENP1 Polyclonal Antibody

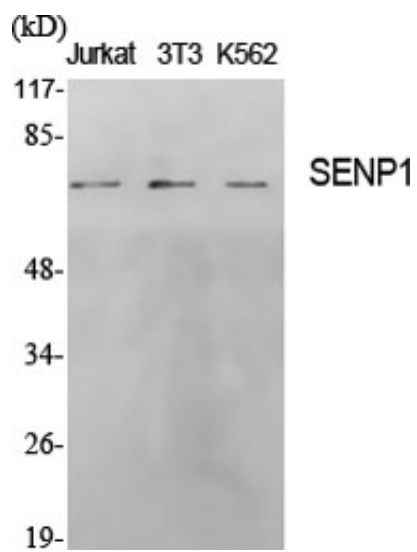
Catalog_no :	AT4236
Applications :	WB,IHC-p,ELISA
Reactivity :	Human,Mouse
Category :	抗原抗体
Size :	100µg/50µg/20µg
Gene_name :	SENP1
Protein_name :	Sentrin-specific protease 1
Humangene_id :	29843
Humanswissprot_no :	Q9P0U3
Mousegene_id :	223870
Mouseswissprot_no :	P59110
Immunogen :	The antiserum was produced against synthesized peptide derived from human SENP1. AA range:1-50
Specificity :	SENP1 Polyclonal Antibody detects endogenous levels of SENP1 protein.
Formulation :	Liquid in PBS containing 50% glycerol, 0.5% BSA and 0.02% sodium azide.
Source :	Rabbit
Dilution :	Western Blot: 1/500 - 1/2000. Immunohistochemistry: 1/100 - 1/300. ELISA: 1/20000. Not yet tested in other applications.
Purification :	The antibody was affinity-purified from rabbit antiserum by affinity-chromatography using epitope-specific immunogen.
Concentration :	1 mg/ml
Storage_stability :	-20°C/1 year
Msds :	MSDS_Antibody.pdf
Other_name :	SENP1; Sentrin-specific protease 1; Sentrin/SUMO-specific protease SENP1
Molecular Weight :	73KD



专注二抗产品

Biodragon旗下品牌

Product Images



Western Blot analysis of various cells using SENP1 Polyclonal Antibody