

## SEN2 Polyclonal Antibody

Catalog_no :	<u>AT4237</u>
Applications :	<u>WB,IHC-p,ELISA</u>
Reactivity :	<u>Human,Mouse,Rat</u>
Category :	<u>抗原抗体</u>
Size :	<u>100µg/50µg/20µg</u>
Gene_name :	<u>SEN2</u>
Protein_name :	<u>Sentrin-specific protease 2</u>
Humangene_id	<u><a href="#">59343</a></u>
:	<u></u>
Humanswissprot	<u><a href="#">Q9HC62</a></u>
_no :	<u></u>
Mousegene_id :	<u><a href="#">75826</a></u>
Mouseswissprot	<u><a href="#">Q91ZX6</a></u>
_no :	<u></u>
Ratgene_id :	<u><a href="#">78973</a></u>
Ratswissprot_no	<u><a href="#">Q9EQE1</a></u>
:	<u></u>
Immunogen :	<u>The antiserum was produced against synthesized peptide derived from human SEN2. AA range:481-530</u>
Specificity :	<u>SEN2 Polyclonal Antibody detects endogenous levels of SEN2 protein.</u>
Formulation :	<u>Liquid in PBS containing 50% glycerol, 0.5% BSA and 0.02% sodium azide.</u>
Source :	<u>Rabbit</u>
Dilution :	<u>Western Blot: 1/500 - 1/2000. Immunohistochemistry: 1/100 - 1/300. ELISA: 1/20000. Not yet tested in other applications.</u>
Purification :	<u>The antibody was affinity-purified from rabbit antiserum by affinity-chromatography using epitope-specific immunogen.</u>
Concentration :	<u>1 mg/ml</u>
Storage_stability	<u>-20°C/1 year</u>
:	<u></u>
Msds :	<u>MSDS_Antibody.pdf</u>



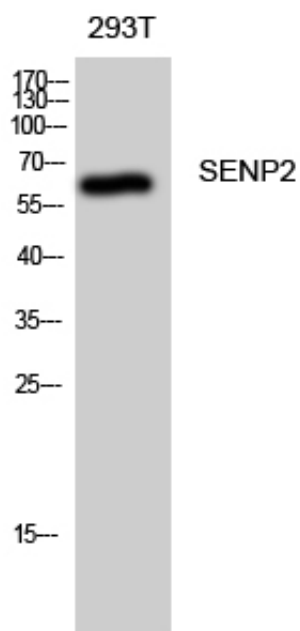
Other\_name : SENP2; KIAA1331; Sentrin-specific protease 2; Axam2; SMT3-specific isopeptidase 2; Smt3ip2; Sentrin/SUMO-specific protease SENP2

---

Molecular Weight : 68KD

---

## Product Images



Western Blot analysis of 293T cells using SENP2  
Polyclonal Antibody diluted at 1 : 1000