

SENP5 Polyclonal Antibody

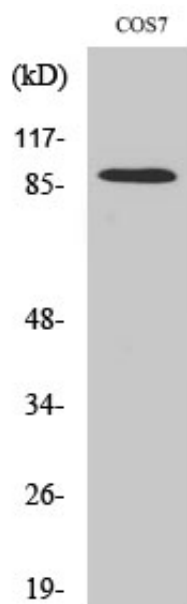
Catalog_no :	AT4239
Applications :	WB,IHC-p,ELISA
Reactivity :	Human,Mouse,Monkey
Category :	抗原抗体
Size :	100µg/50µg/20µg
Gene_name :	SENP5
Protein_name :	Sentrin-specific protease 5
Humangene_id :	205564
Humanswissprot_no :	Q96HI0
Mousegene_id :	320213
Mouseswissprot_no :	Q6NXL6
Immunogen :	The antiserum was produced against synthesized peptide derived from human SENP5. AA range:651-700
Specificity :	SENP5 Polyclonal Antibody detects endogenous levels of SENP5 protein.
Formulation :	Liquid in PBS containing 50% glycerol, 0.5% BSA and 0.02% sodium azide.
Source :	Rabbit
Dilution :	Western Blot: 1/500 - 1/2000. Immunohistochemistry: 1/100 - 1/300. ELISA: 1/20000. Not yet tested in other applications.
Purification :	The antibody was affinity-purified from rabbit antiserum by affinity-chromatography using epitope-specific immunogen.
Concentration :	1 mg/ml
Storage_stability :	-20°C/1 year
Msds :	MSDS_Antibody.pdf
Other_name :	SENP5; FKSG45; Sentrin-specific protease 5; Sentrin/SUMO-specific protease SENP5
Molecular Weight :	86KD



专注二抗产品

Biodragon旗下品牌

Product Images



Western Blot analysis of various cells using SENP5 Polyclonal Antibody cells nucleus extracted by Minute TM Cytoplasmic and Nuclear Fractionation kit (SC-003, Inventbiotech, MN, USA).